

## 5. PNEUMATIC CONNECTORS AND OTHER PRODUCTS

<p><b>One Touch Fittings</b></p> <p>Series WP2 Sizes : Ø4 to 16mm</p>	<p><b>One Touch Fittings (Mini)</b></p> <p>Series WP3 Sizes : Ø4 &amp; Ø6mm</p>	<p><b>One Touch Fittings (Stainless Steel)</b></p> <p>Series WM5 Sizes : Ø4 to 16mm</p>	<p><b>Polyurethane Tube</b></p> <p>Series WH Sizes : Ø4 to 16mm</p>
Page No. 5.1.1 - 5.1.11	5.1.12 - 5.1.13	5.1.14 - 5.1.16	5.2.1
<p><b>Polyurethane Coiled Tube</b></p> <p>Series WHC Sizes : Ø4 to 12mm</p>	<p><b>Tube Holder</b></p> <p>Series WT Sizes : Ø4 to 12mm</p>	<p><b>Air Blow Gun (Plastic)</b></p> <p>Series WB Size : G1/4</p>	<p><b>Air Blow Gun (Metal)</b></p> <p>Series WB2 Size : G1/4</p>
Page No. 5.3.1	5.4.1	5.5.1	5.5.2 - 5.5.5
<p><b>Nipples</b></p> <p>Series WN Sizes : M5 to 1"</p>	<p><b>Junction Box</b></p> <p>Series WJ Sizes : M5 to G1/2</p>	<p><b>Silencer</b></p> <p>Series AS Sizes : M5 to G1/2</p>	<p><b>High Pressure Silencer</b></p> <p>Series AS02M Size : G1/2, G3/4, G1"</p>
Page No. 5.6.1	5.7.1 - 5.7.2	5.8.1	5.8.2
<p><b>Quick Coupler</b></p> <p>Series WQ Sizes : G1/4, 1/2</p>			
Page No. 5.9.1 - 5.9.3			

## 6. PNEUMATIC SYSTEMS

<p><b>Cabinets &amp; Panels</b></p> <p>Series JPS</p>	<p><b>Didactic Products</b></p> <p>Series JTK</p>
Page No. 6.1.1	6.2.1 - 6.2.2



# One - Touch Fittings

Series : WP2



- Union
- Elbow
- Tee
- Y
- Connector
- Swivel
- Multi Distributor
- Self Sealing
- Tubes
- Tube Cutter

# ONE TOUCH FITTINGS

## Series WP2

Cat No WP2 - 01 - D

### ONE TOUCH FITTINGS - M5, 1/8, 1/4, 3/8, 1/2, 3/4, 1"

#### Features

- Attractive design
- Compact size
- Threaded nipples of L, T & Y fittings enable plastic portion to turn by 360°
- Full area of the inner bore of the tubing is available for flow of fluid
- Bubble tight sealing of tubes
- Suitable for both Nylon and PU tubing
- Easy and quick push-in connection of tube / easy removal of tube by simple pressing of collet cap
- "New design" - Stainless steel collet
- Teflon pre-coated male taper threads
- Maintenance free and long life
- The fitment and function of tubes are not affected by vibrations due to positive gripping of the tube by the collet

#### Application

One-touch fittings can be effectively used in all compressed air applications

Some of the pneumatic applications include

- Pneumatic cylinders (all types)
- Directional control valves, solenoid valves and other valves
- Air preparation units like filter, regulator and lubricators
- Pneumatic control panels
- All compressed air lines, machinery of all kinds wherever pneumatic systems are used
- Pneumatic circuits in any industry

#### Technical Specifications

Medium	Air #			
Max. operating pressure	10 bar			
Ambient temperature	-10° to +60° C			
Medium temperature	+5° to +50° C			
Threaded connection	Male: R - Taper thread, Female: G - Parallel thread			
Applicable tube material	Nylon, Polyurethane			
Applicable tube size (OD)	Ø4, 6, 8, 10, 12, 14 and 16 mm			
Recommended tolerance for tube OD	± 0.1 mm			
Recommended minimum wall thickness of tubes	<b>Nylon</b>		<b>PU</b>	
	Tube OD (mm)	Thickness (mm)	Tube OD (mm)	Thickness (mm)
	Ø4	1	Ø4	1
	Ø6		Ø6	1
	Ø8		Ø8	1.5
	Ø10		Ø10	1.5
	Ø12		Ø12	2
	Ø14		Ø14	2
		Ø16	2.5	

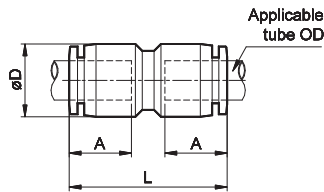
# - for other fluids, contact **JANATICS**

# ONE TOUCH FITTINGS

## Series WP2

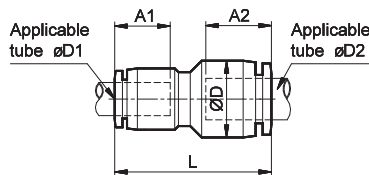
Cat No WP2 - 01 - D

### Straight Union



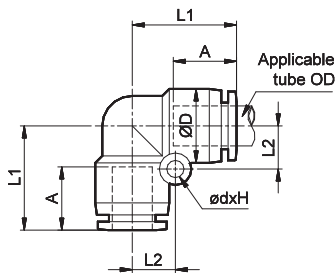
Applicable Tube OD	ØD	L	A	Ordering No
4	10.5	31.5	14.5	WP2100404
6	12.5	33	15.5	WP2100606
8	15	35	16	WP2100808
10	18.5	39.5	19	WP2101010
12	21	41.5	20	WP2101212
14	23	42.5	20.5	WP2101414
16	25.5	45.5	22	WP2101616

### Different Dia. Straight Union



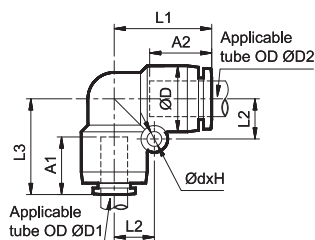
Applicable Tube OD		ØD	L	A1	A2	Ordering No
ØD1	ØD2					
4	6	12.5	32	14.5	15.5	WP2140406
6	8	15	34	15.5	16	WP2140608
6	10	18.5	41	15.5	18	WP2140610
8	10	18.5	37.5	16	18	WP2140810
8	12	21	41	16	18.5	WP2140812
10	12	21	40.5	18	18.5	WP2141012
12	16	25.5	48.5	21.5	22	WP2141216

### Union Elbow



Applicable Tube OD	ØD	L1	L2	A	Ød x H	Ordering No
4	10.5	18.5	6.5	14.5	3.3 x 11	WP2200404
6	12.5	20	7.5	15.5	3.3 x 13	WP2200606
8	15	22	9	16	3.3 x 15.5	WP2200808
10	18.5	26	11	20	4.3 x 19	WP2201010
12	21	27.5	12	20.5	4.3 x 21.5	WP2201212
14	23	29	13	21.5	4.3 x 23.5	WP2201414
16	25.5	31.5	14.5	22.5	4.3 x 26	WP2201616

### Union Elbow Reducer



Applicable Tube OD		ØD	L1	L2	L3	A1	A2	Ød x H	Ordering No
ØD1	ØD2								
8	12	21	27.5	12	27	16	18.5	Ø4.3x21.5	WP2200812

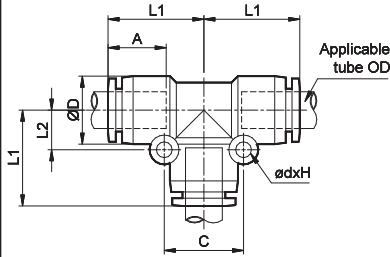
A, A1, A2 - Tube insertion length

# ONE TOUCH FITTINGS

## Series WP2

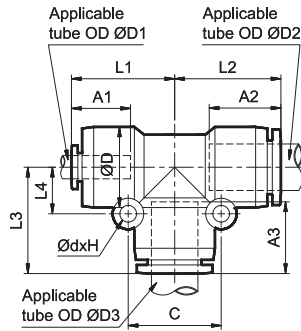
Cat No WP2 - 01 - D

### Union Tee



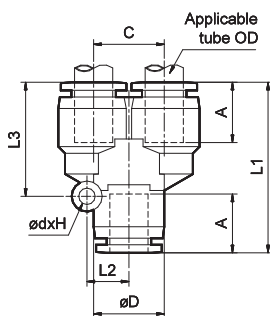
Applicable Tube OD	ØD	L1	L2	C	A	Ød x H	Ordering No
4	10.5	18.5	6.5	13	14.5	3.3 x11	WP2300404
6	12.5	20	7.5	15	15.5	3.3 x13	WP2300606
8	15	22	9	18	16	3.3 x15.5	WP2300808
10	18.5	26	11	22	20	4.3 x19	WP2301010
12	21	27.5	12	24	20.5	4.3 x21.5	WP2301212
14	23	29	13	26	21.5	4.3 x 23.5	WP2301414
16	25.5	31.5	14.5	29	22.5	4.3 x 26	WP2301616

### Union Tee Reducer



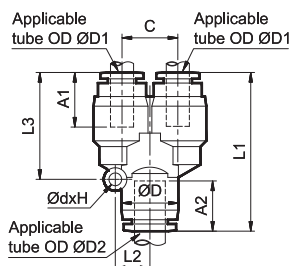
Applicable Tube OD			ØD	L1	L2	L3	L4	C	A1	A2	A3	Ød x H	Ordering No
ØD1	ØD2	ØD3											
4	4	6	12.5	23.5	23.5	20	7.5	15	14.5	14.5	15.5	Ø3.3x13	WP230040406
6	6	4	12.5	20	20	23.5	7.5	15	15.5	15.5	14.5	Ø3.3x13	WP230060604
6	6	8	15	25.5	25.5	22	9	18	15.5	15.5	16	Ø3.3x15.5	WP230060608
6	12	12	21	27	27.5	27.5	12	24	15.5	20.5	20.5	Ø4.3x21.5	WP230061212
8	8	6	15	22	22	25.5	9	18	16	16	15.5	Ø3.3x15.5	WP230080806
8	8	10	18.5	28.5	28.5	26	11	22	16	16	20	Ø4.3x19	WP230080810
8	12	12	21	27	27.5	27.5	12	24	16	20.5	20.5	Ø4.3x21.5	WP230081212
10	10	6	18.5	26	26	25	11	22	20	20	15.5	Ø4.3x19	WP230101006
10	10	8	18.5	26	26	28.5	11	22	20	20	16	Ø4.3x19	WP230101008
10	10	12	21	32	32	27.5	12	24	20	20	20.5	Ø4.3x21.5	WP230101012
12	12	6	21	27.5	27.5	27	12	24	20.5	20.5	15.5	Ø4.3x21.5	WP230121206
12	12	8	21	27.5	27.5	27	12	24	20.5	20.5	16	Ø4.3x21.5	WP230121208
12	12	10	21	27.5	27.5	32	12	24	20.5	20.5	20	Ø4.3x21.5	WP230121210

### Union 'Y'



Applicable Tube OD	ØD	L1	L2	L3	C	A	Ød x H	Ordering No
4	10.5	31.5	6.5	19	10	14.5	3.3 x11	WP2400404
6	12.5	34.5	7.5	22	12	15.5	3.3 x13	WP2400606
8	15	38	9	24.5	14.5	16	3.3 x15.5	WP2400808
10	18.5	44	11	29.5	18	18	4.3 x19	WP2401010
12	21	47	12	32	20	18.5	4.3 x21.5	WP2401212

### Union 'Y' Reducer



Applicable Tube OD			ØD	L1	L2	L3	C	A1	A2	Ød x H	Ordering No
ØD1	ØD2										
4	4	6	12.5	38	7.5	25	12	14.5	15.5	Ø3.3x13	WP240040406
6	6	8	15	41.5	9	28	14.5	15.5	16	Ø3.3x15.5	WP240060608
8	8	10	18.5	46.5	11	32	18	16	18	Ø4.3x19	WP240080810

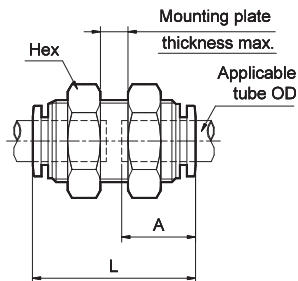
\* M5 threads are supplied with sealing washer  
A1, A2, A3 - Tube insertion length

# ONE TOUCH FITTINGS

## Series WP2

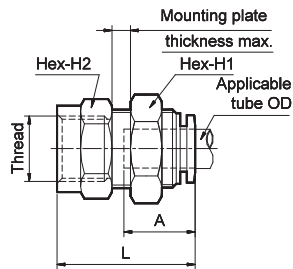
Cat No WP2 - 01 - D

### Bulk Head Union



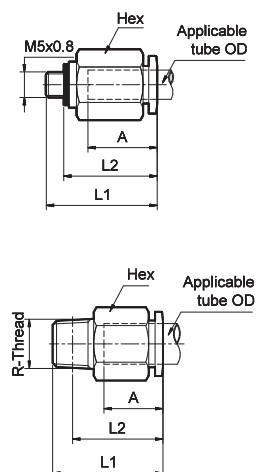
Applicable Tube OD	Hex	L	A	Mounting plate thickness max.	Mounting hole dia	Ordering No
4	14	31.5	14.5	16	12.5	WP2500404
6	17	32.5	15.5	14	14.5	WP2500606
8	19	34	16	12	16.5	WP2500808
10	24	38	18	12	20.5	WP2501010
12	27	39	18.5	12	22.5	WP2501212
14	30	40	19	10	25	WP2501414
16	32	49	23.5	12	28	WP2501616

### Bulk Head Female Connector



Applicable Tube OD	Thread (G)	Hex H1	Hex H2	L	A	Mounting plate thickness max.	Mounting hole dia	Ordering No
6	1/4	17	17	32	15.5	8	14.5	WP2520661
8	1/4	19	17	32	16	7	16.5	WP2520861

### Male Connector



Applicable Tube OD	Thread	Hex	L1	L2	A	Ordering No
4	* M5 x 0.8	10	21	17.5	14.5	WP2110470
	R1/8	10	21.5	18	14.5	WP2110450
	R1/4	14	18	12.5	14.5	WP2110451
6	* M5 x 0.8	12	22	18.5	15.5	WP2110670
	R1/8	12	23	19.5	15.5	WP2110650
	R1/4	14	25.5	20	15.5	WP2110651
	R3/8	17	20	14	15.5	WP2110652
8	R1/8	14	25.5	22	16	WP2110850
	R1/4	14	27	21.5	16	WP2110851
	R3/8	17	22.5	16.5	16	WP2110852
	R1/2	22	25.5	18	16	WP2110853
10	R1/4	17	29.5	24	18	WP2111051
	R3/8	17	30	24	18	WP2111052
	R1/2	22	26	18.5	18	WP2111053
12	R1/4	22	36	30	22.5	WP2111251
	R3/8	22	34.5	29	22.5	WP2111252
	R1/2	22	32.5	25	22.5	WP2111253
14	1/2	24	34	26.5	19	WP2111453
	3/4	27	30	21	19	WP2111454
16	1/2	24	38	27.5	21.5	WP2111653
	3/4	27	32	23	21.5	WP2111654
	1	36	37	27	21.5	WP2111655

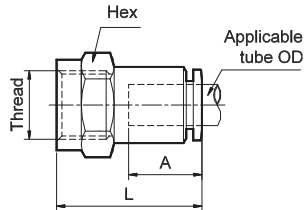
\* M5 threads are supplied with sealing washer  
A - Tube insertion length

# ONE TOUCH FITTINGS

## Series WP2

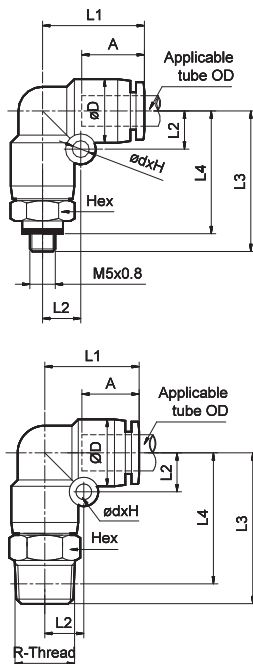
Cat No WP2 - 01 - D

### Female Connector



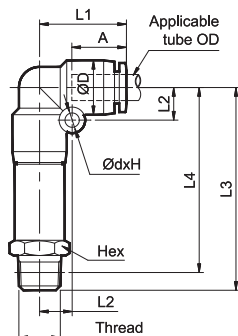
Applicable Tube OD	Thread (G)	Hex	L	A	Ordering No
4	1/8	14	27	14.5	WP2120460
	1/4	17	31	14.5	WP2120461
6	1/8	14	27	15.5	WP2120660
	1/4	17	31.5	15.5	WP2120661
8	1/8	14	27	16	WP2120860
	1/4	17	31.5	16	WP2120861
	3/8	22	33.5	16	WP2120862
10	1/4	17	33	18	WP2121061
	3/8	22	35	18	WP2121062
12	3/8	22	35	18.5	WP2121262
	1/2	27	39.5	18.5	WP2121263
14	1/2	27	39	19	WP2121463

### Male Elbow



Applicable Tube OD	Thread	Hex	ØD	L1	L2	L3	L4	A	ØdxH	Ordering No
4	* M5 x 0.8	9	10.5	18.5	6.5	25.5	22	14.5	3.3x11	WP2210470
	R1/8	10	10.5	18.5	6.5	30	26.5	14.5	3.3x11	WP2210450
	R1/4	14	10.5	18.5	6.5	32	26.5	14.5	3.3x11	WP2210451
6	* M5 x 0.8	11	12.5	20	7.5	28	24.5	15.5	3.3x13	WP2210670
	R1/8	12	12.5	20	7.5	31.5	28	15.5	3.3x13	WP2210650
	R1/4	14	12.5	20	7.5	33.5	28	15.5	3.3x13	WP2210651
	R3/8	17	12.5	20	7.5	35	29	15.5	3.3x13	WP2210652
8	R1/8	14	15	22	9	33.5	30	16	3.3x15.5	WP2210850
	R1/4	14	15	22	9	37	31.5	16	3.3x15.5	WP2210851
	R3/8	17	15	22	9	36.5	30.5	16	3.3x15.5	WP2210852
	R1/2	22	15	22	9	42	34.5	16	3.3x15.5	WP2210853
10	R1/4	17	18.5	26	11	41.5	36	20	4.3x19	WP2211051
	R3/8	17	18.5	26	11	42	36	20	4.3x19	WP2211052
	R1/2	22	18.5	26	11	45.5	38	20	4.3x19	WP2211053
12	R1/4	19	21	27.5	12	44	38.5	20.5	4.3x21.5	WP2211251
	R3/8	19	21	27.5	12	44.5	38.5	20.5	4.3x21.5	WP2211252
	R1/2	22	21	27.5	12	47	39.5	20.5	4.3x21.5	WP2211253
14	1/2	22	23	29	13	50.5	43	21.5	4.3x23.5	WP2211453
	3/4	27	23	29	13	51.5	42.5	21.5	4.3x23.5	WP2211454
16	1/2	24	25.5	31.5	14.5	54	46.5	22.5	4.3x26	WP2211653
	3/4	27	25.5	31.5	14.5	54	45	22.5	4.3x26	WP2211654
	1	36	25.5	31.5	14.5	61	51	22.5	4.3x26	WP2211655

### Extended Male Elbow



Applicable Tube OD	Thread R	Hex	ØD	L1	L2	L3	L4	A	Ød x H	Ordering No
4	1/4	14	10.5	18.5	6.5	44	37.5	14.5	3.3x11	WP2230451
6	1/8	12	12.5	20	7.5	47	43.5	15.5	3.3x13	WP2230650
	1/4	14	12.5	20	7.5	47.5	42	15.5	3.3x13	WP2230651
8	1/4	14	15	22	9	55	49.5	16	3.3x15.5	WP2230851
10	1/4	17	18.5	26	11	64	58.5	20	4.3x19	WP2231051
	3/8	17	18.5	26	11	64.5	58.5	20	4.3x19	WP2231052
12	1/2	22	21	27.5	12	71	63.5	20.5	4.3x21.5	WP2231253

\* M5 threads are supplied with sealing washer  
A - Tube insertion length

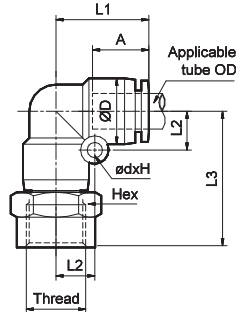


# ONE TOUCH FITTINGS

## Series WP2

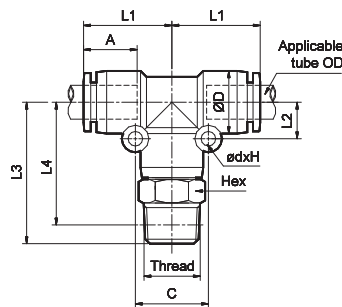
Cat No WP2 - 01 - D

### Female Elbow



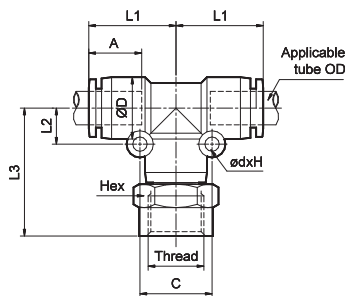
Applicable Tube OD	Thread (G)	Hex	ØD	L1	L2	L3	A	Ød x H	Ordering No
6	1/8	14	12.5	20	7.5	28	15.5	3.3x13	WP2220660
	1/4	17	12.5	20	7.5	33	15.5	3.3x13	WP2220661
8	1/4	17	15	22	9	34	16	3.3x15.5	WP2220861
14	1/2	27	23	29	13	45.5	21.5	4.3x23.5	WP2221463

### Male Branch Tee



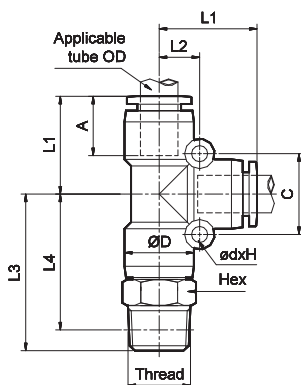
Applicable Tube OD	Thread (R)	Hex	ØD	L1	L2	L3	L4	C	A	ØdxH	Ordering No
4	1/8	10	10.5	18.5	6.5	30	26.5	13	14.5	3.3x11	WP2310450
	1/4	14	10.5	18.5	6.5	32	26.5	13	14.5	3.3x11	WP2310451
6	1/8	12	12.5	20	7.5	31.5	28	15	15.5	3.3x13	WP2310650
	1/4	14	12.5	20	7.5	33.5	28	15	15.5	3.3x13	WP2310651
8	1/8	14	15	22	9	33.5	30	18	16	3.3x15.5	WP2310850
	1/4	14	15	22	9	37	31.5	18	16	3.3x15.5	WP2310851
	3/8	17	15	22	9	36.5	30.5	18	16	3.3x15.5	WP2310852
10	1/4	17	18.5	26	11	41.5	36	22	20	4.3x19	WP2311051
	3/8	17	18.5	26	11	42	36	22	20	4.3x19	WP2311052
12	3/8	19	21	27.5	12	44.5	38.5	24	20.5	4.3x21.5	WP2311252
	1/2	22	21	27.5	12	47	39.5	24	20.5	4.3x21.5	WP2311253
14	1/2	22	23	29	13	50.5	43	26	21.5	4.3x23.5	WP2311453

### Female Branch Tee



Applicable Tube OD	Thread (G)	Hex	ØD	L1	L2	L3	C	A	Ød x H	Ordering No
6	1/8	14	12.5	20	7.5	28	15	15.5	3.3x13	WP2320660
	1/4	17	12.5	20	7.5	33	15	15.5	3.3x13	WP2320661
8	1/4	17	15	22	9	34	18	16	3.3x15.5	WP2320861

### Male Run Tee



Applicable Tube OD	Thread (R)	Hex	ØD	L1	L2	L3	L4	C	A	Ød x H	Ordering No
4	1/8	10	10.5	18.5	6.5	30	26.5	13	14.5	3.3x11	WP2330450
	1/4	14	10.5	18.5	6.5	32	26.5	13	14.5	3.3x11	WP2330451
6	1/8	12	12.5	20	7.5	31.5	28	15	15.5	3.3x13	WP2330650
	1/4	14	12.5	20	7.5	33.5	28	15	15.5	3.3x13	WP2330651
8	1/8	14	15	22	9	33.5	30	18	16	3.3x15.5	WP2330850
	1/4	14	15	22	9	37	31.5	18	16	3.3x15.5	WP2330851
	3/8	17	15	22	9	36.5	30.5	18	16	3.3x15.5	WP2330852
10	1/4	17	18.5	26	11	41.5	36	22	20	4.3x19	WP2331051
	3/8	17	18.5	26	11	42	36	22	20	4.3x19	WP2331052
12	3/8	19	21	27.5	12	44.5	38.5	24	20.5	4.3x21.5	WP2331252
	1/2	22	21	27.5	12	47	39.5	24	20.5	4.3x21.5	WP2331253

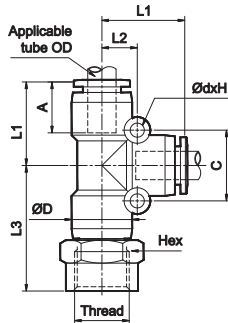
A - Tube insertion length

# ONE TOUCH FITTINGS

## Series WP2

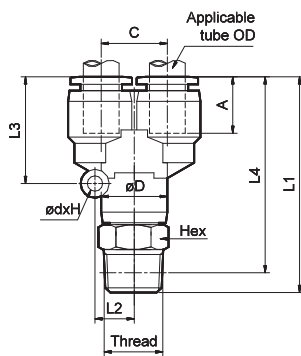
Cat No WP2 - 01 - D

### Female Run Tee



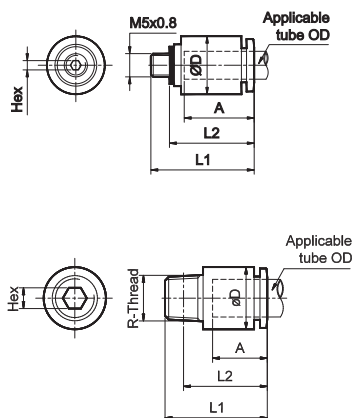
Applicable Tube OD	Thread (G)	Hex	ØD	L1	L2	L3	C	A	Ød x H	Ordering No
6	1/8	14	12.5	20	7.5	28	15	15.5	3.3x13	WP2340660
	1/4	17	12.5	20	7.5	33	15	15.5	3.3x13	WP2340661
8	1/4	17	15	22	9	34	18	16	3.3x15.5	WP2340861

### Male Branch 'Y'



Applicable Tube OD	Thread (R)	Hex	ØD	L1	L2	L3	L4	C	A	ØdxH	Ordering No
4	1/8	10	10.5	42.5	6.5	19	39	10	14.5	3.3x11	WP2410450
	1/4	14	10.5	44.5	6.5	19	39	10	14.5	3.3x11	WP2410451
6	1/8	12	12.5	46	7.5	22	42.5	12	15.5	3.3x13	WP2410650
	1/4	14	12.5	48	7.5	22	42.5	12	15.5	3.3x13	WP2410651
8	1/8	14	15	49.5	9	24.5	46	14.5	16	3.3x15.5	WP2410850
	1/4	14	15	53	9	24.5	47.5	14.5	16	3.3x15.5	WP2410851
	3/8	17	15	52.5	9	24.5	46.5	14.5	16	3.3x15.5	WP2410852
10	1/4	17	18.5	59.5	11	29.5	54	18	18	4.3x19	WP2411051
	3/8	17	18.5	60	11	29.5	54	18	18	4.3x19	WP2411052
12	3/8	19	21	64	12	32	58	20	18.5	4.3x21.5	WP2411252
	1/2	22	21	66.5	12	32	59	20	18.5	4.3x21.5	WP2411253

### Male Connector ( Internal Hexagon Socket )



Applicable Tube OD	Thread	Hex	ØD	L1	L2	A	Ordering No
4	* M5 x 0.8	2	10.5	21	17.5	14.5	WP2130470
	R1/8	2.5	10.5	21.5	18	14.5	WP2130450
	R1/4	2.5	13.5	17.5	12	14.5	WP2130451
6	* M5 x 0.8	2	12.5	22	18.5	15.5	WP2130670
	R1/8	4	12.5	23	19.5	15.5	WP2130650
	R1/4	4	13.5	22.5	17	15.5	WP2130651
8	R3/8	4	17	19	13	15.5	WP2130652
	R1/8	4	14.5	25.5	22	16	WP2130850
	R1/4	6	14.5	27	21.5	16	WP2130851
10	R3/8	6	17	22.5	16.5	16	WP2130852
	R1/2	6	21.5	21.5	14	16	WP2130853
	R1/8	4	18	28	24.5	18	WP2131050
12	R1/4	6	18	29.5	24	18	WP2131051
	R3/8	6	18	30	24	18	WP2131052
	R1/2	6	21.5	23.5	16	18	WP2131053
12	R1/4	6	20	32	26.5	18.5	WP2131251
	R3/8	8	20	30.5	24.5	18.5	WP2131252
	R1/2	8	21.5	32.5	25	18.5	WP2131253

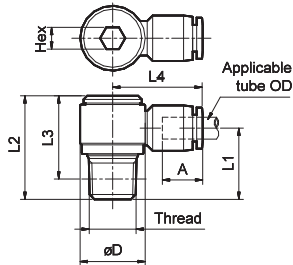
\* M5 threads are supplied with sealing washer  
A - Tube insertion length

# ONE TOUCH FITTINGS

## Series WP2

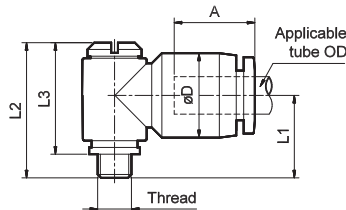
Cat No WP2 - 01 - D

### Single Swivel (Internal Hexagon Socket)



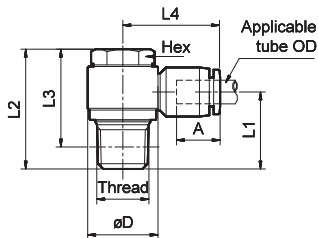
Applicable Tube OD	Thread (R)	Hex	ØD	L1	L2	L3	L4	A	Ordering No
4	1/8	5	13.5	15	22	18.5	22	14.5	WS0210450
6	1/8	5	13.5	15.5	22	18.5	23	15.5	WS0210650
	1/4	6	18	20	28.5	23	25	15.5	WS0210651
8	1/8	5	13.5	17.5	22	18.5	27	17	WS0210850
	1/4	6	18	20.5	28.5	23	27.5	17	WS0210851
	3/8	8	22	23	32.5	26.5	29.5	17	WS0210852
	1/2	10	28	26.5	38	30.5	32.5	17	WS0210853
10	1/4	6	18	22.5	28.5	23	32.5	20	WS0211051
	3/8	8	22	24	32.5	26.5	34.5	20	WS0211052
	1/2	10	28	27.5	38	30.5	36.5	20	WS0211053
12	3/8	8	22	25	32.5	26.5	36	20.5	WS0211252
	1/2	10	28	28.5	38	30.5	37.5	20.5	WS0211253

### Single Swivel (Slotted Head)



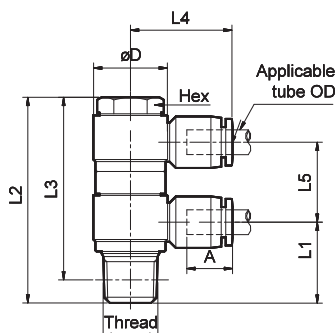
Applicable Tube OD	Thread	ØD	L1	L2	L3	A	Ordering No
4	* M5 x 0.8	10.5	12.5	20	16.5	14.5	WS0010470
6	* M5 x 0.8	12.5	12.5	20	16.5	15.5	WS0010670

### Single Swivel (Hexagon Head)



Applicable Tube OD	Thread (R)	Hex	ØD	L1	L2	L3	L4	A	Ordering No
4	1/8	12	13.5	15	24.5	21	22	14.5	WS0110450
6	1/8	12	13.5	15.5	24.5	21	23	15.5	WS0110650
	1/4	14	18	20	30.5	25	25	15.5	WS0110651
8	1/8	12	13.5	17.5	24.5	21	27	17	WS0110850
	1/4	14	18	20.5	30.5	25	27.5	17	WS0110851
	3/8	19	22	23	36.5	30.5	29.5	17	WS0110852
	1/2	24	28	26.5	42	34.5	32.5	17	WS0110853
10	1/4	14	18	22.5	30.5	25	32.5	20	WS0111051
	3/8	19	22	24	36.5	30.5	34.5	20	WS0111052
	1/2	24	28	27.5	42	34.5	36.5	20	WS0111053
12	3/8	19	22	25	36.5	30.5	36	20.5	WS0111252
	1/2	24	28	28.5	42	34.5	37.5	20.5	WS0111253

### Double Swivel



Applicable Tube OD	Thread (R)	Hex	ØD	L1	L2	L3	L4	L5	A	Ordering No
4	1/8	12	13.5	15	40	36.5	22	15.5	14.5	WS0120450
6	1/8	12	13.5	15.5	40	36.5	23	15.5	15.5	WS0120650
	1/4	14	18	20	50	44.5	25	19.4	15.5	WS0120651
8	1/8	12	13.5	17.5	40	36.5	27	15.5	17	WS0120850
	1/4	14	18	20.5	50	44.5	27.5	19.4	17	WS0120851
	3/8	19	22	23	58.5	52.5	29.5	21.6	17	WS0120852
	1/2	24	28	26.5	63.5	56	32.5	21.5	17	WS0120853
10	1/4	14	18	22.5	50	44.5	32.5	19.4	20	WS0121051
	3/8	19	22	24	58.5	52.5	34.5	21.6	20	WS0121052
	1/2	24	28	27.5	63.5	56	36.5	21.5	20	WS0121053
12	3/8	19	22	25	58.5	52.5	36	21.6	20.5	WS0121252
	1/2	24	28	28.5	63.5	56	37.5	21.5	20.5	WS0121253

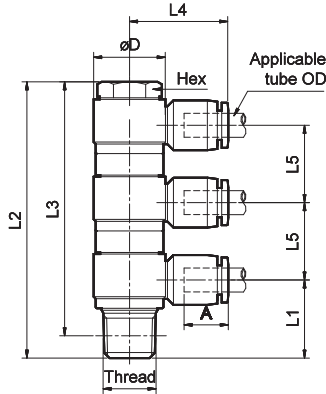
\* M5 threads are supplied with sealing washer  
A, A1, A2 - Tube insertion length

# ONE TOUCH FITTINGS

## Series WP2

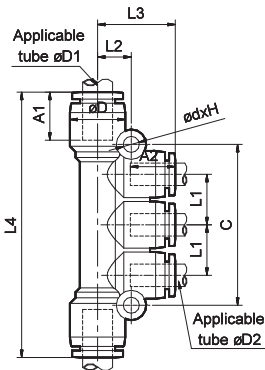
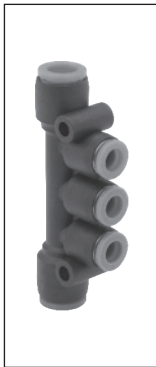
Cat No WP2 - 01 - D

### Triple Swivel



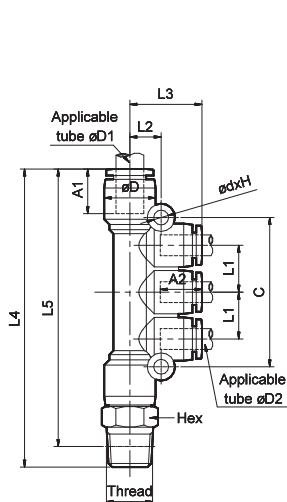
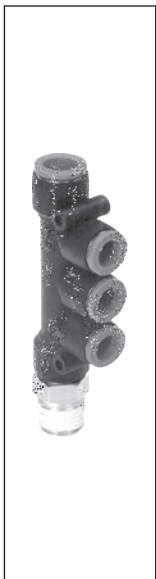
Applicable Tube OD	Thread (R)	Hex	ØD	L1	L2	L3	L4	L5	A	Ordering No
4	1/8	12	13.5	15	55.5	52	22	15.5	14.5	WS0130450
6	1/8	12	13.5	15.5	55.5	52	23	15.5	15.5	WS0130650
	1/4	14	18	20	69.5	64	25	19.4	15.5	WS0130651
8	1/8	12	13.5	17.5	55.5	52	27	15.5	17	WS0130850
	1/4	14	18	20.5	69.5	64	27.5	19.4	17	WS0130851
	3/8	19	22	23	80	74	29.5	21.6	17	WS0130852
	1/2	24	28	26.5	85	77.5	32.5	21.5	17	WS0130853
10	1/4	14	18	22.5	69.5	64	32.5	19.4	20	WS0131051
	3/8	19	22	24	80	74	34.5	21.6	20	WS0131052
	1/2	24	28	27.5	85	77.5	36.5	21.5	20	WS0131053
12	3/8	19	22	25	80	74	36	21.6	20.5	WS0131252
	1/2	24	28	28.5	85	77.5	37.5	21.5	20.5	WS0131253

### Multi Distributor Union



Applicable Tube OD		ØD	L1	L2	L3	L4	C	A1	A2	ØdxH	Ordering No
ØD1	ØD2										
6	4	12.5	11.5	8	19	60.5	37	15.5	14.5	4.3x13	WD2100604
8	4	15	11.5	9	20	63	37	17	14.5	4.3x15.5	WD2100804
8	6	15	13.5	9	21	71	43	17	15.5	4.3x15.5	WD2100806
10	6	18.5	13.5	11	22	76	43	20	15.5	4.3x19	WD2101006
10	8	18.5	16	11	24	82	51	20	17	4.3x19	WD2101008
12	8	21	16	12	24	84.5	51	20.5	17	4.3x21.5	WD2101208
12	10	21	19.5	12	27.5	92.5	61	20.5	20	4.3x21.5	WD2101210

### Multi Distributor Male



Applicable Tube OD		Thread (R)	Hex	ØD	L1	L2	L3	L4	L5	C	A1	A2	ØdxH	Ordering No
ØD1	ØD2													
6	4	1/8	12	12.5	11.5	8	19	72	68.5	37	15.5	14.5	4.3x13	WD211060450
		1/4	14	12.5	11.5	8	19	74	68.5	37	15.5	14.5	4.3x13	WD211060451
		3/8	17	12.5	11.5	8	19	75	69	37	15.5	14.5	4.3x13	WD211060452
8	4	1/8	14	15	11.5	9	20	74.5	71	37	17	14.5	4.3x15.5	WD211080450
		1/4	14	15	11.5	9	20	78	72.5	37	17	14.5	4.3x15.5	WD211080451
		3/8	17	15	11.5	9	20	77.5	71.5	37	17	14.5	4.3x15.5	WD211080452
8	6	1/8	14	15	13.5	9	21	82.5	79	43	17	15.5	4.3x15.5	WD211080650
		1/4	14	15	13.5	9	21	86	80.5	43	17	15.5	4.3x15.5	WD211080651
		3/8	17	15	13.5	9	21	85.5	79.5	43	17	15.5	4.3x15.5	WD211080652
10	6	1/4	17	18.5	13.5	11	22	91.5	86	43	20	15.5	4.3x19	WD211100651
		3/8	17	18.5	13.5	11	22	92	86	43	20	15.5	4.3x19	WD211100652
		1/2	22	18.5	13.5	11	22	95.5	88	43	20	15.5	4.3x19	WD211100653
10	8	1/4	17	18.5	16	11	24	97.5	92	51	20	17	4.3x19	WD211100851
		3/8	17	18.5	16	11	24	98	92	51	20	17	4.3x19	WD211100852
		1/2	22	18.5	16	11	24	101.5	94	51	20	17	4.3x19	WD211100853
12	8	3/8	19	21	16	12	24	101	95	51	20.5	17	4.3x21.5	WD211120852
		1/2	22	21	16	12	24	103.5	96	51	20.5	17	4.3x21.5	WD211120853
12	10	3/8	19	21	19.5	12	27.5	109	103	61	20.5	20	4.3x21.5	WD211121052
		1/2	22	21	19.5	12	27.5	111.5	104	61	20.5	20	4.3x21.5	WD211121053

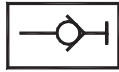
A, A1, A2 - Tube insertion length

# ONE TOUCH FITTINGS

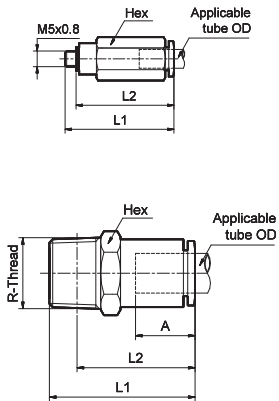
## Series WP2

Cat No WP2 - 01 - D

### Self Sealing Fittings



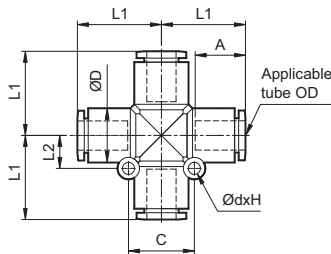
These one touch fittings ( with built in self seal ) seal automatically once the tubing has been removed



Applicable Tube OD	Thread	Hex	L1	L2	A	Ordering No	Tube Pushing Force in kg #
4	* M5 x 0.8	10	32.5	29	15.5	WE20110470	2.5
	R1/8	10	27	23.5	15.5	WE20110450	
	R1/4	14	27	21.5	15.5	WE20110451	
6	* M5 x 0.8	12	35	31.5	16.5	WE20110670	4
	R1/8	12	29	25.5	16.5	WE20110650	
8	R1/4	14	29	23.5	16.5	WE20110651	6
	R1/8	14	35	31.5	18.5	WE20110850	
	R3/8	17	36	30	18.5	WE20110852	
10	R1/4	17	38	32.5	20.5	WE20111051	8.5
	R3/8	17	38.5	32.5	20.5	WE20111052	
	R1/2	22	39	31.5	20.5	WE20111053	
12	R3/8	19	44	38	22.5	WE20111252	11
	R1/2	22	44.5	37	22.5	WE20111253	

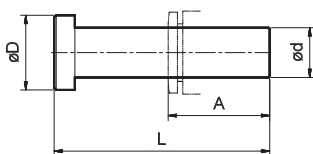
# for air pressure of 7 bar

### Cross Union



Applicable Tube OD	ØD	L1	L2	C	A	ØdxH	Ordering No
4	10.5	18.5	6.5	13	15.5	3.3 x 11	WP2700404
6	12.5	20	7.5	15	16.5	3.3 x 13	WP2700606
8	15	23	9	18	18	3.3 x 15.5	WP2700808
10	18.5	27	11	22	20	4.3 x 19	WP2701010
12	21	28.5	12	24	21.5	4.3 x 21.5	WP2701212

### Plug



Applicable Fitting size Ød	ØD	L	A	Ordering No
4	10	42	14.5	WP2600400
6	12	44	15.5	WP2600600
8	14	46	17	WP2600800
10	16	48	20	WP2601000
12	18	52	20.5	WP2601200

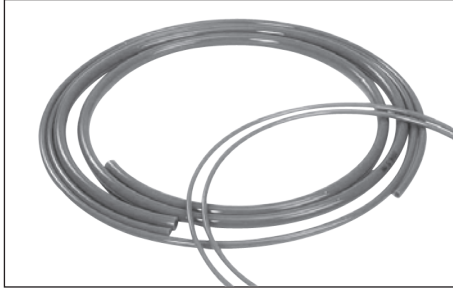
\* M5 threads are supplied with sealing washer  
A, A1, A2 - Tube insertion length

# ONE TOUCH FITTINGS

## Series WP2

Cat No WP2 - 01 - D

### Nylon Tube



Tube OD in mm	Ø4	Ø6	Ø8	Ø10	Ø12	Ø14
Ordering no.	WH01W04	WH01W06	WH01W08	WH01W10	WH01W12	WH01W14

Colour : Nylon - White

### Usage instructions

( For maximum efficiency )

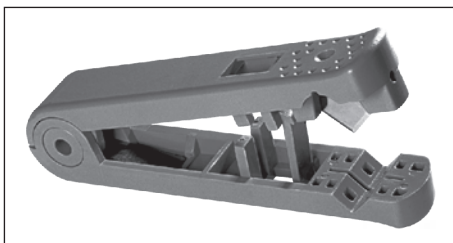
- Cut the tube - end burr free and square, using **Tube cutter ( WC1 )** and clean the edge to ensure leak tight joints. (Do not use blunt tools / hacksaw / chisel etc.,)
- Ensure the tube is fully inserted into the fitting - until the positive stop, beyond the 'U' seal.
- Tightening torque for threaded components

Thread size	Tightening torque Nm
M5	1 - 1.5
1/8	7 - 9
1/4	12 - 14
3/8	22 - 24
1/2	28 - 30

- Minimum bend radius of the tubing to avoid leakage

Min. bend radius for (in mm)	OD of tube	Ø4	Ø6	Ø8	Ø10	Ø12	Ø14
	Nylon	15	40	50	60	80	100

### Tube Cutter



Ordering No	WC1
-------------	-----

Can cut tubes upto Ø12mm OD

### How to Order

While ordering fittings, mention the Ordering number given in the corresponding tables, and for tubes, mention the ordering number with required length in metres.

# ONE TOUCH FITTINGS

## Series WP3 (Mini)

Cat No WP3 - 01 - 01 - B

### MALE CONNECTOR & MALE ELBOW - Ø4 & Ø6 mm

#### Features

- Miniature - Save space
- Attractive design
- Compact size
- Full area of the inner bore of the tubing is available for flow of fluid
- Bubble tight sealing of tubes
- Suitable for both Nylon and PU tubing
- Easy and quick push-in connection of tube / easy removal of tube by simple pressing of collet cap
- "New design" - Stainless steel collet
- Teflon pre-coated male taper threads
- Maintenance free and long life
- The fitment and function of tubes are not affected by vibrations due to positive gripping of the tube by the collet

#### Application

One-touch fittings can be effectively used in all compressed air applications

Some of the pneumatic applications include

- Pneumatic cylinders (all types)
- Directional control valves, solenoid valves and other valves
- Air preparation units like filter, regulator and lubricators
- Pneumatic control panels
- All compressed air lines, machinery of all kinds wherever pneumatic systems are used
- Pneumatic circuits in any industry

#### Technical Specifications

Fluid	Air #			
Max. operating pressure	10 bar			
Ambient temperature	-10° to +60° C			
Medium temperature	+5° to +50° C			
Threaded connection	Male: R - Taper thread, M - Metric thread, G - Straight thread			
Applicable tube material	Nylon, Polyurethane			
Applicable tube size (OD)	Ø4, Ø6 mm			
Recommended tolerance for tube OD	± 0.1 mm			
Recommended minimum wall thickness of tubes	<b>Nylon</b>		<b>PU</b>	
	Tube OD (mm)	Thickness (mm)	Tube OD (mm)	Thickness (mm)
	Ø4	1	Ø4	1
	Ø6	1	Ø6	1

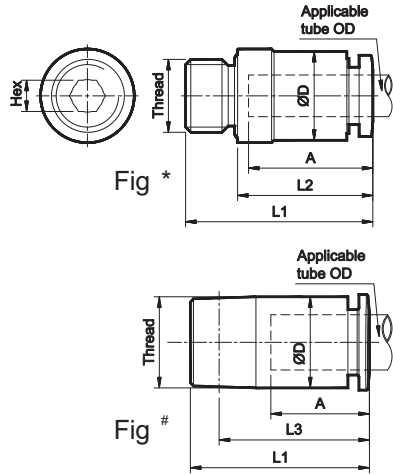
# - for other fluids, contact **JANATICS**

# ONE TOUCH FITTINGS

## Series WP3 (Mini)

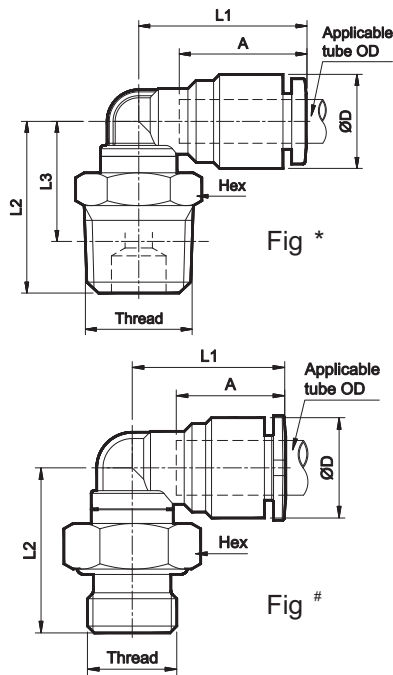
Cat No WP3 - 01 - 01 - B

### Male connector (Internal hexagon socket)



Applicable Tube OD	Thread	Hex	ØD	L1	L2	L3	A	Ordering No
4 *	M5 x 0.8	2	8	18.5	15	-	13	WP3130470
	M7 x 1	2.5	9.8	18	12.5	-	12.5	WP3130472
6	M5 x 0.8 *	2	10	18	14.5	-	12.5	WP3130670
	M7 x 0.8 *	4	10	21	15.5	-	12.5	WP3130672
	R1/8 #	4	10	20.5	-	17	12.5	WP3130650

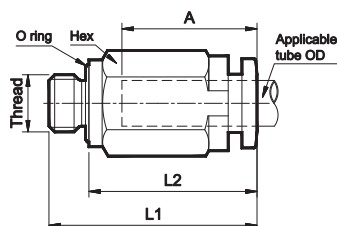
### Male Elbow (Mini)



Applicable Tube OD	Thread	Hex	ØD	L1	L2	L3	A	Ordering No
4 *	R1/8	10	8.6	15.5	15.7	12.2	13	WP3210450
6 *	R1/8	12	11	17	25	21	13	WP3210650

Applicable Tube OD	Thread	Hex	ØD	L1	L2	A	Ordering No
4 #	M5 x 0.8	7	8.6	15.5	14	13	WP3210470
	M6 x 1	10	8.6	15.5	16.5	13	WP3210471
6 #	M5 x 0.8	10	11	17	16	13	WP3210670
	M12 x 1.25	17	11	17	18.5	13	WP3210675B
	G1/8	13	11	17	18.5	13	WP3210660
	M7 x 1	10	11	17	18	13	WP3210672
	G1/8	13	11	17	23	13	WP3210660GB01A

### Male Connector (Mini)



Applicable Tube OD	Thread	Hex	L1	L2	A	Ordering No
4	M5 x 0.8	8	18.2	14.7	12.7	WP3110470
6	M6 x 1	10	20	14.8	12.5	WP3110671

### How to Order

While ordering fittings, mention the Ordering number given in the corresponding tables.

A - Tube insertion length

Subject to change



# ONE TOUCH FITTINGS

## Stainless Steel - Series WM5

Cat No WM5 - 01 - 01 - A

### ONE TOUCH FITTINGS ( STAINLESS STEEL ) - Ø4 to 16mm

#### Features

- Attractive design
- Compact size
- Threaded nipples of Male Elbow fittings enable to turn by 360°
- Full area of the inner bore of the tubing is available for flow of fluid
- Stainless steel design ensures superior clamping by bubble tight sealing of various tubes
- Suitable for different materials of tubing (Nylon (Polyamide), Soft Nylon, Polyurethane, Polyethylene)
- Easy and quick push-in connection of tube / easy removal of tube by simple pressing of collet cap
- Maintenance free and long life
- Short parallel thread connection
- Male thread seal - BSP - PTFE seal
- No loosening of tube due to vibration - positive gripping by collet

#### Applications

Stainless steel fittings can be effectively used in all air, water and steam applications

Some of the air, water and steam applications include

- Movement applications like air cylinders (all types), robotics, conveyor systems
- Directional control valves, solenoid valves and other valves
- Air preparation units like filter, regulator and lubricators
- Applicable to use with all food industry and beverages industries
- High temperature industries like power plants, oil & gas and other applications
- High corrosion resistant material allows to use with chemical industries and medical equipments
- Any systems requiring transfer of compressed air, water, steam through lines and machineries of all kinds

#### Technical Specifications

Medium	Air, Water, Steam #			
Maximum operating pressure	10 bar			
Ambient / Medium temperature for Viton	-5° to +150° C			
Ambient / Medium temperature for NBR	-10° to +60° C			
Threaded connection	Male: G - Parallel thread, Female: G - Parallel thread			
Materials of construction	SS 304, SS 316, FKM (Viton), NBR (on request), PTFE			
Applicable tube material	PA6 (Nylon), Soft Nylon, Polyurethane, Polyethylene			
Applicable tube size (OD)	Ø4, 6, 8, 10, 12 and 16 mm			
Recommended tolerance for tube OD	± 0.1 mm			
Recommended minimum wall thickness of tubes	Nylon		PU	
	Tube OD (mm)	Thickness (mm)	Tube OD (mm)	Thickness (mm)
	Ø4	1	Ø4	1
	Ø6		Ø6	1
	Ø8		Ø8	1.5 / 1.25
	Ø10		Ø10	1.5
	Ø12		Ø12	2
	Ø16		Ø16	2.5

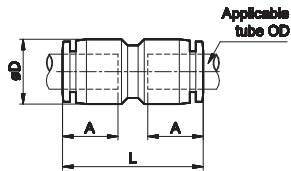
# - for other fluids, contact **JANATICS**

# ONE TOUCH FITTINGS

## Stainless Steel - Series WM5

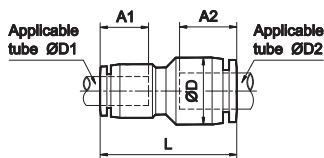
Cat No WM5 - 01 - 01 - A

### Straight Union



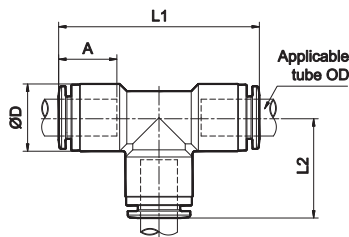
Applicable Tube OD	ØD	L	A	Ordering No
4	10.5	26.5	12.5	WM5100404DB
6	12	29	14	WM5100606DB
8	14.5	33.5	16	WM5100808DB
10	18	35	17	WM5101010DB
12	20	41	20	WM5101212DB
16	24	42.5	20.5	WM5101616DB

### Different Dia. Straight Union



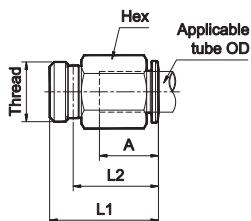
Applicable Tube OD		ØD	L	A1	A2	Ordering No
ØD1	ØD2					
4	6	12	28	12.5	14	WM5140406DB
6	8	15	31	14	16	WM5140608DB
8	10	18	34	16	17	WM5140810DB
10	12	20	38	17	20	WM5141012DB
12	16	24	42	20	20.5	WM5141216DB

### Union Tee



Applicable Tube OD	ØD	L1	L2	A	Ordering No
4	10.5	36	18	12.5	WM530040404DB
6	12	40	20	14	WM530060606DB
8	15	44	21.5	16	WM530080808DB
10	18	49	24.5	17	WM530101010DB
12	20	54.5	27	20	WM530121212DB
16	24	58.5	29	20.5	WM530161616DB

### Male Connector



Applicable Tube OD	Thread	Hex	L1	L2	A	Ordering No
4	G1/8	10	17.5	13	12.5	WM5110460SD01B
	G1/4	14	19.5	14	12.5	WM5110461SD01B
6	G1/8	12	20	15.5	14	WM5110660SD01B
	G1/4	14	21	16	14	WM5110661SD01B
	G3/8	17	23	17	14	WM5110662SD01B
8	G1/8	14	24	19	16	WM5110860SD01B
	G1/4	14	24	19	16	WM5110861SD01B
	G3/8	17	23	17	16	WM5110862SD01B
10	G1/8	17	25	20	17	WM5111060SD01B
	G1/4	17	26	21	17	WM5111061SD01B
	G3/8	17	25	19	17	WM5111062SD01B
	G1/2	22	25	18	17	WM5111063SD01B
12	G1/4	19	29	24	20	WM5111261SD01B
	G3/8	19	29.5	23.5	20	WM5111262SD01B
	G1/2	22	28.5	22	20	WM5111263SD01B
16	G3/8	24	31	25	20.5	WM5111662SD01B
	G1/2	24	32	25	20.5	WM5111663SD01B

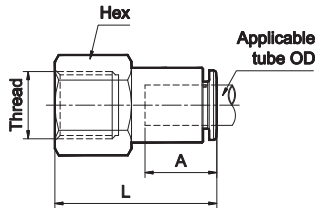
A, A1, A2 - Tube insertion length

# ONE TOUCH FITTINGS

## Stainless Steel - Series WM5

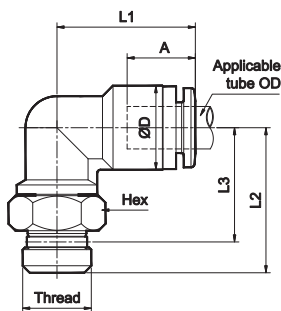
Cat No WM5 - 01 - 01 - A

### Female Connector



Applicable Tube OD	Thread	Hex	L	A	Ordering No
4	G1/8	12	24.5	12.5	WM5120460D01B
	G1/4	17	29	12.5	WM5120461D01B
6	G1/8	12	25.5	14	WM5120660D01B
	G1/4	17	29.5	14	WM5120661D01B
	G3/8	19	32	14	WM5120662D01B
8	G1/8	14	27	16	WM5120860D01B
	G1/4	17	32	16	WM5120861D01B
	G3/8	19	33	16	WM5120862D01B
10	G1/4	17	32.5	17	WM5121061D01B
	G3/8	19	34.5	17	WM5121062D01B
	G1/2	24	34.5	17	WM5121063D01B
12	G1/4	19	35.5	20	WM5121261D01B
	G3/8	19	37.5	20	WM5121262D01B
	G1/2	24	41	20	WM5121263D01B
16	G3/8	24	38	20.5	WM5121662D01B
	G1/2	24	42.5	20.5	WM5121663D01B

### Male Elbow



Applicable Tube OD	Thread	Hex	ØD	L1	L2	L3	A	Ordering No
4	G1/8	12	10	18	20	15	12.5	WM5210460SD01B
	G1/4	14	10	18	21	15.5	12.5	WM5210461SD01B
6	G1/8	12	12	21	21	16	14	WM5210660SD01B
	G1/4	14	12	21	21.5	16	14	WM5210661SD01B
	G3/8	17	12	21	22.5	16.5	14	WM5210662SD01B
8	G1/8	12	14.5	24	22.5	18	16	WM5210860SD01B
	G1/4	14	14.5	24	23.5	18	16	WM5210861SD01B
	G3/8	17	14.5	24	24	18	16	WM5210862SD01B
10	G1/8	14	17.5	27	24	19	17	WM5211060SD01B
	G1/4	14	17.5	27	25	19.5	17	WM5211061SD01B
	G3/8	17	17.5	27	26	20	17	WM5211062SD01B
	G1/2	22	17.5	27	28	21	17	WM5211063SD01B
12	G1/4	17	20	30	26.5	21	20	WM5211261SD01B
	G3/8	19	20	30	27.5	21	20	WM5211262SD01B
	G1/2	22	20	30	30	22.5	20	WM5211263SD01B
16	G3/8	19	24	34	30	24	20.5	WM5211662SD01B
	G1/2	22	24	34	32	25	20.5	WM5211663SD01B

### How to order

While ordering fittings, mention the Ordering number given in the corresponding tables, and for tubes, mention the ordering number with required length in metres.

# POLYURETHANE TUBE

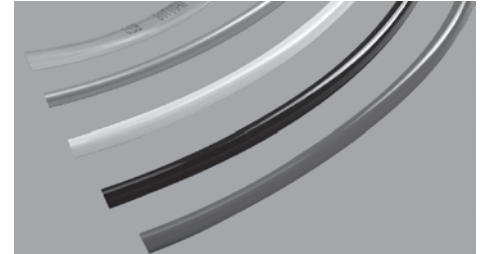
## Series WH

Cat No WH - 01 - 01 - C

### COLOURED POLYURETHANE TUBES - Ø4, 6, 8, 10, 12, 14, 16mm OD

#### Advantages

- Provide differentiation of air line in pneumatic circuits



#### Specifications

Medium	Compressed air
Maximum pressure	Refer below table
Ambient temperature	

#### Usage instructions

( For maximum efficiency )

- Cut the tube - end burr free and square, using **Tube cutter ( WC1 )** and clean the edge to ensure leak tight joints. (Do not use blunt tools / hacksaw / chisel etc.,)
- Ensure the tube is fully inserted into the fitting - until the positive stop, beyond the '**U**' seal
- For ensuring proper insertion, pull the tube gently by hand. Polyurethane tube will yield and come out if pulled heavily
- Minimum bend radius of the tubing to avoid leakage

Tube OD	Ø4	Ø6	Ø8	Ø10	Ø12	Ø14	Ø16
Minimum bend radius (in mm)	10	15	25	30	35	130	140

Tube size		Tube Colour & Ordering No.					
Tube OD	Tube ID	Blue (Standard)	Black	Red	Yellow	Silver	Transparent
4	2	WH00B04	WH00K04	WH00R04	WH00Y04	WH00S04	WH00T04
6	4	WH00B06	WH00K06	WH00R06	WH00Y06	WH00S06	WH00T06
8	5	WH00B08	WH00K08	WH00R08	WH00Y08	WH00S08	WH00T08
10	7	WH00B10	WH00K10	WH00R10	WH00Y10	WH00S10	WH00T10
12	8	WH00B12	WH00K12	WH00R12	WH00Y12	WH00S12	WH00T12
14	10	WH00B14	-	-	-	-	-
16	11	WH00B16	-	-	-	-	-

#### Recommended Pressure vs Working Temperature

Pressure	Temperature
10 bar	5°C to 30°C
9 bar	30°C to 40°C
8 bar	40°C to 50°C
7 bar	50°C to 60°C

#### How to Order

Ordering Example : Ø8 PU tube Transparent - **WH00T08**

Subject to change

# POLYURETHANE COILED TUBE

## Series WHC

Cat No WHC - 01 - 01

### POLYURETHANE COILED TUBE - Ø4, 6, 8, 10, 12mm OD

#### Advantages

- ❑ Self retracting & space saving

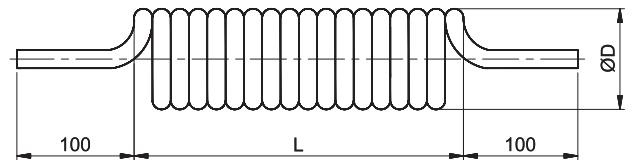
#### Application

- ❑ Pneumatic control and powerlines
- ❑ Air tools
- ❑ Assembly work stations
- ❑ Service stations / Garage equipments
- ❑ Machine tools



#### Specifications

Medium	Compressed air
Maximum pressure	10 bar
Ambient temperature	+5° to +60° C



S. No.	Tube size (Tube OD)	Coil OD (ØD) in mm	Winding length (L) in mm	Operating length in metre						
				2	4	6	8	10	12	15
1	Ø4	24		165	345	525	680	850	1000	1275
2	Ø6	32		190	400	580	780	980	1170	1480
3	Ø8	42		190	400	580	800	1000	1200	1500
4	Ø10	65		150	300	450	620	760	900	1150
5	Ø12	65		180	375	560	750	950	1150	1450

#### How to order

<b>WHC10</b>	<b>R</b>	<b>04</b>	—	<b>02</b>	
<b>Tube colour</b>		<b>Tube size</b>		<b>Operating length</b>	
B	Blue	04	Ø 4	02	2 metre
R	Red	06	Ø 6	04	4 metre
Y	Yellow	08	Ø 8	06	6 metre
K	Black	10	Ø 10	08	8 metre
S	Silver grey	12	Ø 12	10	10 metre
				12	12 metre
				15	15 metre

#### Ordering example:

Ø4 Coiled tube, Red colour with 2 metre operating length - **WHC10R04-02**

Subject to change

# TUBE HOLDER

## Series WT

Cat No WT - 01 - 01

### TUBE HOLDER - Ø4, 6, 8, 10, 12mm

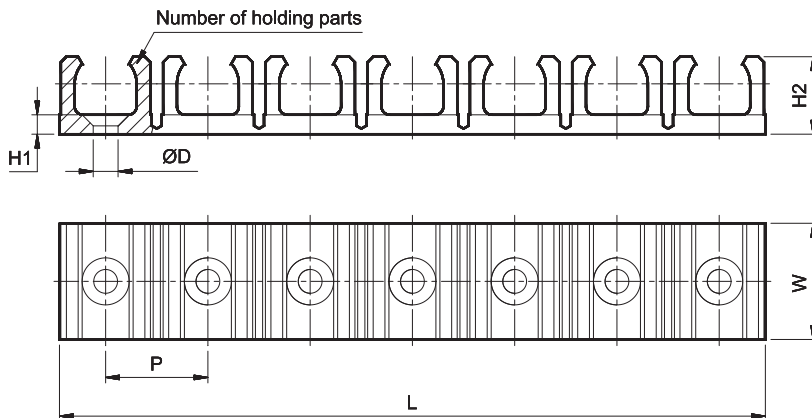
#### Features

- Suitable for Nylon & Polyurethane tubes



#### Application

Tube holders are used to arrange the pneumatic tubings in a proper way.  
(Example: Pneumatic control panels)



Applicable Tube OD	L	W	H1	H2	ØD	P	Number of holding parts	Ordering No
4	66.5	13	2.5	6.5	3.5	8.5	8	WT004-08
6	108.5	16	3	8.5	3.5	11	10	WT006-10
8	106.5	17	3	10.5	3.5	13.5	8	WT008-08
10	126.5	19	3.5	12.5	4.5	16	8	WT010-08
12	128	21	3.5	14	4.5	18.5	7	WT012-07

#### How to order

While ordering Tube holder, mention the ordering number given in the corresponding tables.

# AIR BLOW GUN

## Series WB

Cat No WB - 01 - 02 - B

### AIR BLOW GUN

#### Features

- Easy handling
- Compact size
- Attractive design
- Good flow and characteristics

#### Applications

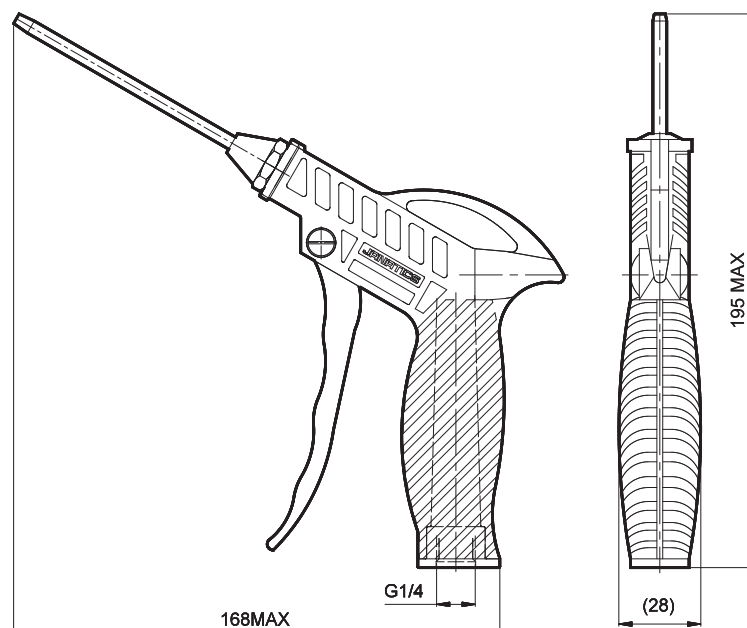
- Blowing off chips in machine tools
- Foundries
- Assembly lines
- Service stations
- Painting (part cleaning)
- Textile mills
- Injection moulding machines (cooling of moulds)
- Pressure die casting machines



#### Technical Specifications

Ordering no	<b>WB101</b>
Medium	Compressed air
Maximum pressure	8 bar *
Inlet connection	G1/4

\* For safety purpose it is strongly recommended to use the air blow gun at air pressure of 2 bar to 3 bar.



Subject to change

# AIR BLOW GUN

## Series WB2

Cat No WB - 01 - 03 - B

### AIR BLOW GUN - METAL

#### Features

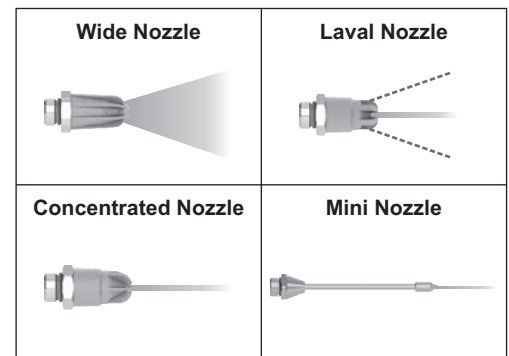
- Energy Saving by 30% without compromising the blowing force\*
- Noise Reduction by 15%\*\*
- Volume of air delivery is more than the input volume due to venturi effect
- OSHA compliance ensures safe & healthy working environment
- Laval nozzle provides protective blowing by deflecting the metal chips which bounces back
- Unique metering valve design provides steady flow & force with respect to handle position
- Sleek & light weight design, feels extremely light on hands
- Heavy and rough uses in industrial environments
- Comes with hook provision



#### Applications

- Blowing of highly viscous metal debris & dust particles
- Blow moving & Material Conveying
- Machine tools protective chip blowing
- Protective dust blowing in foundry
- Painting (part cleaning)
- Injection moulding machines (cooling of moulds)
- Textile mills & Drying of panels

#### Blowing Pattern



#### Technical Specifications

Design		Air Blow Gun with Wide Nozzle	Air Blow Gun with Laval Nozzle	Air Blow Gun with Concentrated Nozzle	Air Blow Gun with Mini Nozzle
Air Consumption @	lpm	400	380	380	330
Noise Level @	dB	80	85	90	85
Blow Force @	g	340	300	300	320
Recommended Operating Pressure	bar	4			
Max. Operating Pressure	bar	10			
Port Size	G	1/4"			
Ambient/Medium Temperature	C	-10° to +80°			
Medium		Compressed air			
Materials of construction		Aluminium, Brass, Nitrile, SS			

@ Inlet pressure 6 bar.

\* When compared to open pipe blowing.

\*\* Measured at specific test condition.

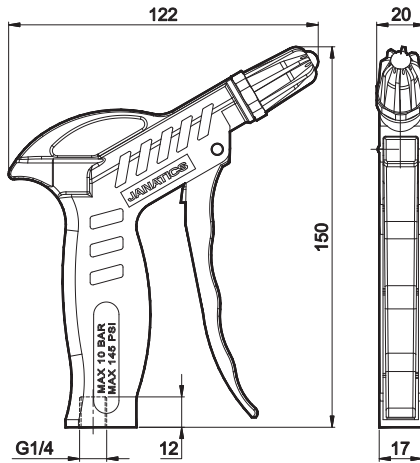


# AIR BLOW GUN

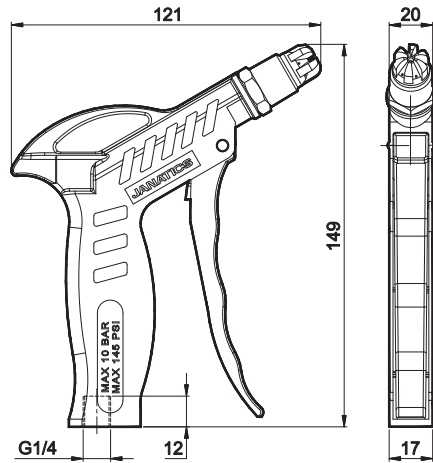
## Series WB2

Cat No WB - 01 - 03 - B

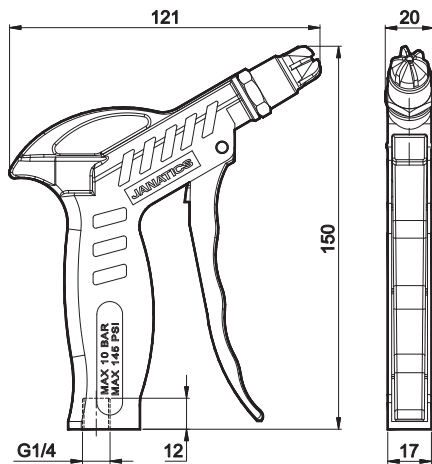
**Air Blow Gun  
with Wide Nozzle (WB202)**



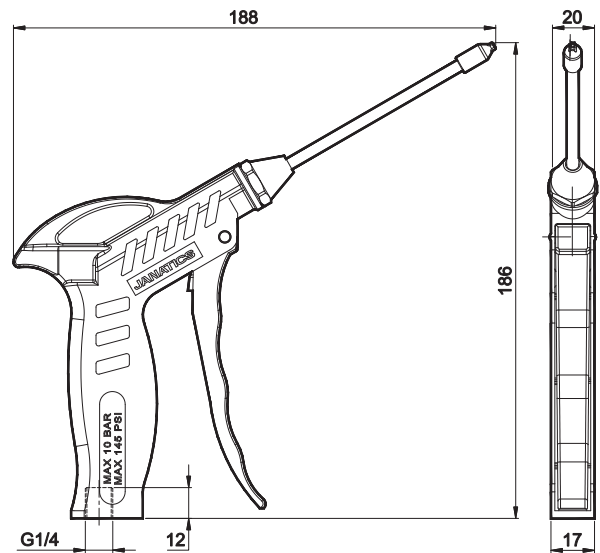
**Air Blow Gun  
with Laval Nozzle (WB203)**



**Air Blow Gun  
with Concentrated Nozzle (WB204)**



**Air Blow Gun  
with Mini Nozzle (WB205)**

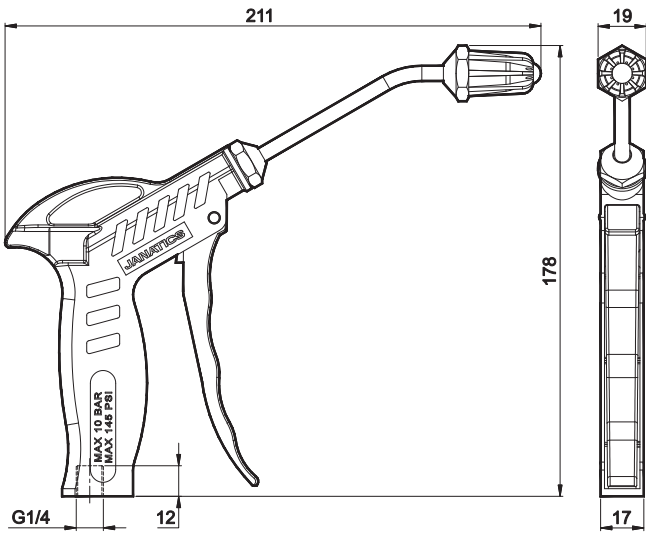


# AIR BLOW GUN

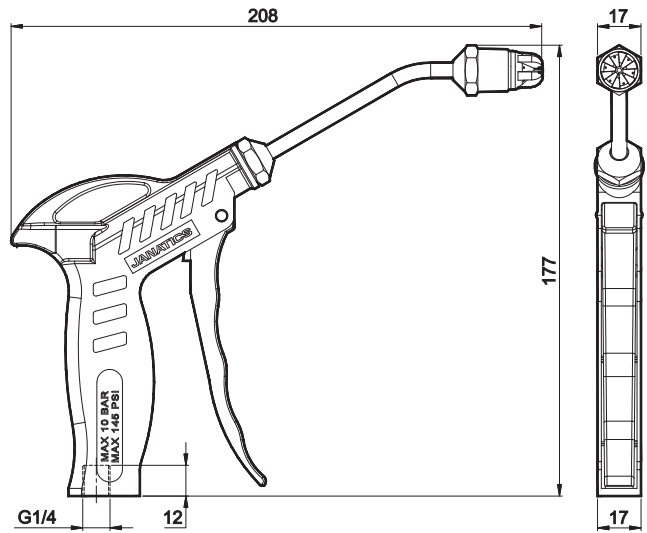
## Series WB2

Cat No WB - 01 - 03 - B

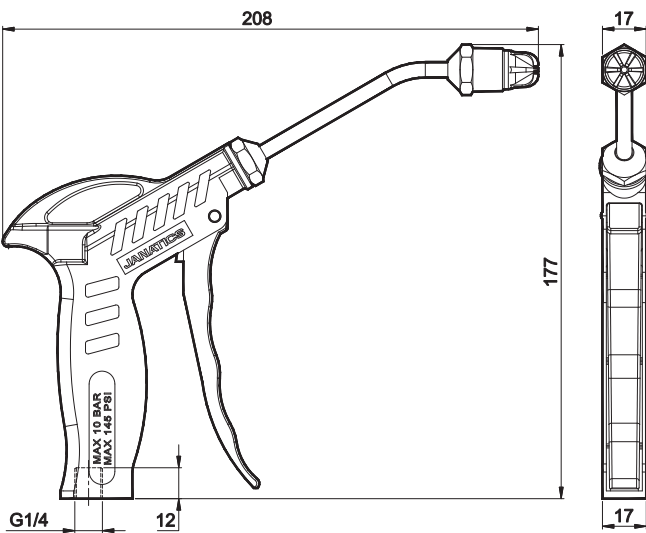
**Air Blow Gun  
with Wide Bend Nozzle (WB206)**



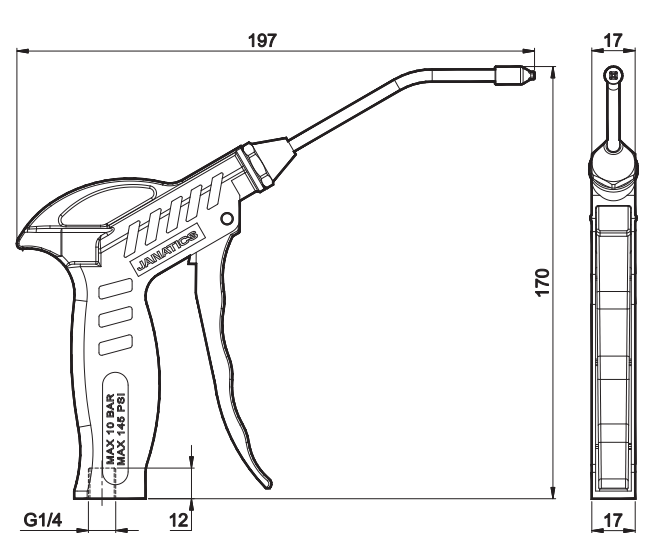
**Air Blow Gun  
with Laval Bend Nozzle (WB207)**



**Air Blow Gun  
with Concentrated Bend Nozzle (WB208)**



**Air Blow Gun  
with Mini Bend Nozzle (WB209)**



# AIR BLOW GUN

## Series WB2

Cat No WB - 01 - 03 - B

### Accessories for Air Blow Gun

Wide Nozzle (WBA02)	Laval Nozzle (WBA03)
Concentrated Nozzle (WBA04)	Mini Nozzle (WBA05)

### How to order

#### Air Blow gun:

<b>W</b>	<b>B</b>	<b>2</b>	<b>03</b>
	<b>Model</b>	<b>Body Material</b> (Applicable for Basic Product)	<b>Nozzle Type</b>
	<b>B</b> Blowgun (Basic Product)	<b>2</b> Metal	<b>02</b> Wide Nozzle <b>03</b> Laval Nozzle <b>04</b> Concentrated Nozzle <b>05</b> Mini Nozzle <b>06</b> Wide Nozzle with Bend Tube <b>07</b> Laval Nozzle with Bend Tube <b>08</b> Concentrated Nozzle with Bend Tube <b>09</b> Mini Nozzle with Bend Tube

#### Ordering example:

Ordering no. For Air Blow Gun with Laval Nozzle: **WB203**

# NIPPLES

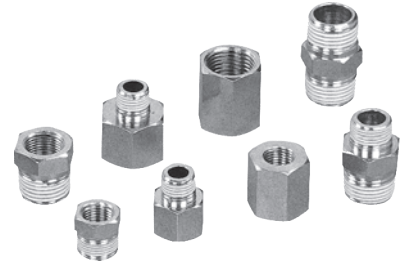
## Series WN

Cat No WN - 01 - C

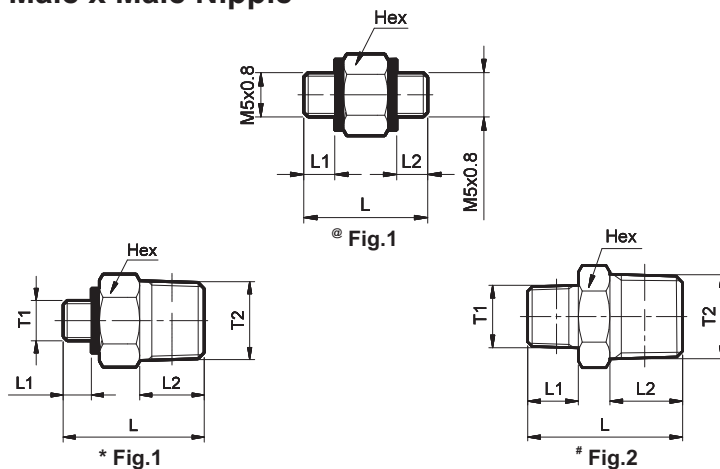
### NIPPLES - M5, 1/8, 1/4, 3/8, 1/2, 3/4, 1"

#### Features

- ❑ Wide variety of nipples available
- ❑ Nickel plated brass body
- ❑ Male (R) taper threads with thread sealant coating
- ❑ Male parallel threads with sealing washer (M5 only)

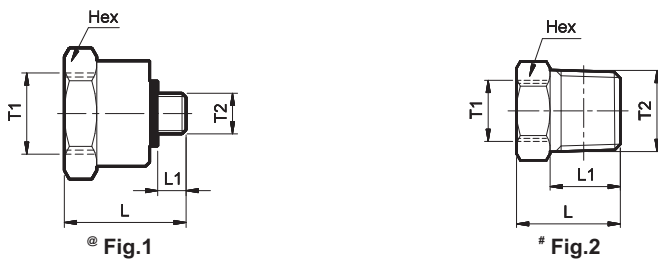


#### Male x Male Nipple



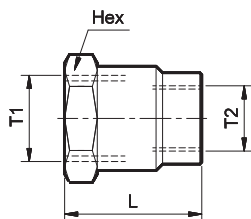
T1	T2	Hex	L	L1	L2	Ordering No
@ M5	M5	8	14	3.5	3.5	WN017070
* M5	R1/8	10	17.5	3.5	8	WN017050
# R1/8	R1/8	10	21	8	8	WN015050
# R1/8	R1/4	14	24.5	8	11.5	WN015051
# R1/4	R1/4	14	28	11.5	11.5	WN015151
# R1/4	R3/8	17	29.5	11.5	12	WN015152
# R3/8	R3/8	17	30	12	12	WN015252
# R3/8	R1/2	22	35.5	12	15.5	WN015253
# R1/2	R1/2	22	39	15.5	15.5	WN015353
# R1/2	R3/4	27	41.5	15.5	17	WN015354
# R3/4	R3/4	27	43	17	21	WN015454
# R1	R1	36	54	21	17	WN015555

#### Female x Male Nipple



T1	T2	Hex	L	L1	Ordering No
# M5	R1/8	10	13	8	WN027050
@ G1/8	M5	14	15	3.5	WN026070
# G1/8	R1/4	14	17	11.5	WN026051
# G1/4	R1/8	17	23.5	8	WN026150
# G1/4	R3/8	17	18.5	12	WN026152
# G3/8	R1/4	19	27.5	11.5	WN026251
# G3/8	R1/2	22	23.5	15.5	WN026253
# G1/2	R3/8	24	32	12	WN026352
# G1/2	R3/4	27	27	17	WN026354
# G3/4	R1/2	30	37.5	15.5	WN026453

#### Female x Female Nipple



T1	T2	Hex	L	Ordering No
M5	M5	8	8	WN037070
G1/8	M5	14	13	WN036070
G1/8	G1/8	14	15	WN036060
G1/4	G1/8	17	21	WN036160
G1/4	G1/4	17	22	WN036161
G3/8	G1/4	19	25	WN036261
G3/8	G3/8	19	23	WN036262
G1/2	G3/8	24	29.5	WN036362
G1/2	G1/2	24	30	WN036363
G3/4	G1/2	30	36	WN036463

#### How to order

While ordering Nipples, mention the ordering number given in the corresponding tables.

Subject to change

# JUNCTION BOX

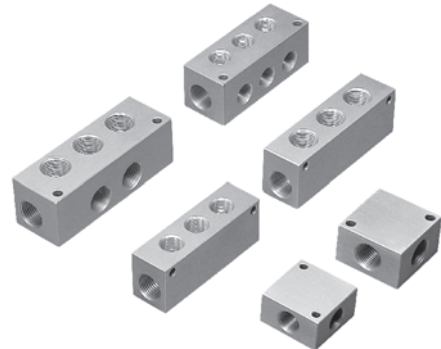
## Series WJ

Cat No WJ - 01 - 02

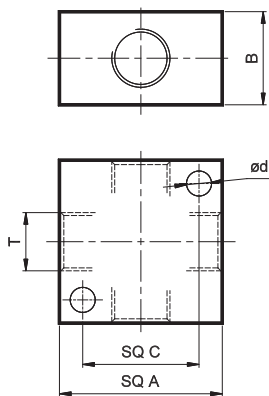
### JUNCTION BOX - M5, 1/8, 1/4, 3/8, 1/2

#### Features

- ❑ Wide range of models available
- ❑ Aluminium anodized body
- ❑ Mounting holes provided

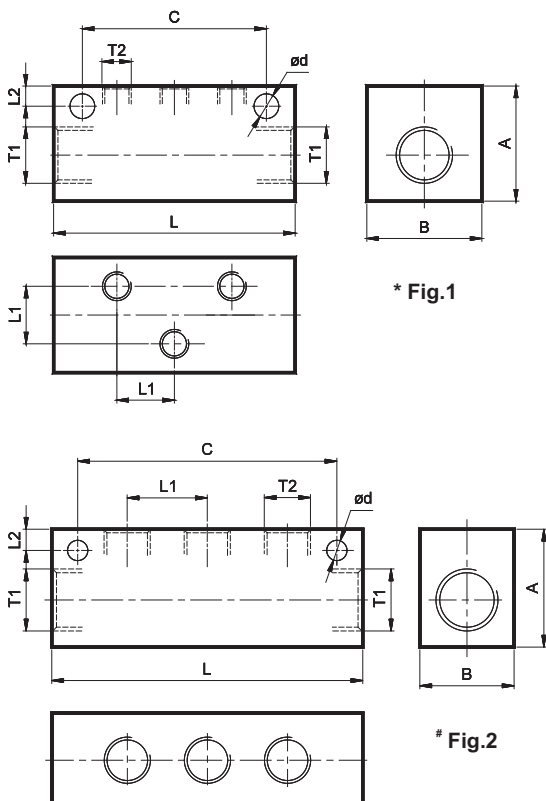


#### Type WJ01



T	SQ A	B	SQ C	Ød	Ordering No
M5	16	10	10.5	3.4	WJ0170
G1/8	28	16	20	4.5	WJ0160
G1/4	35	20	25	5.5	WJ0161
G3/8	45	25	33	5.5	WJ0162
G1/2	50	32	38	6.6	WJ0163

#### Type WJ02



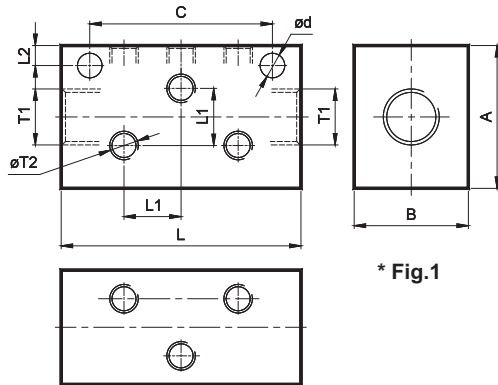
T1	T2	No. off T2 Ports	A	B	L	L1	L2	C	Ød	Ordering No
G1/8	* M5 x 0.8	3	20	20	42	10	3.5	32	4.5	WJ02036070
G1/4	# G1/8	3	25	20	66	17	4.5	55	4.5	WJ02036160
G3/8	# G1/4	3	30	25	82	22	6	70	5.5	WJ02036261
G1/2	# G3/8	3	38	30	100	26	6	85	6.6	WJ02036362
G1/2	# G1/2	3	40	32	117	32	6	100	6.6	WJ02036363

# JUNCTION BOX

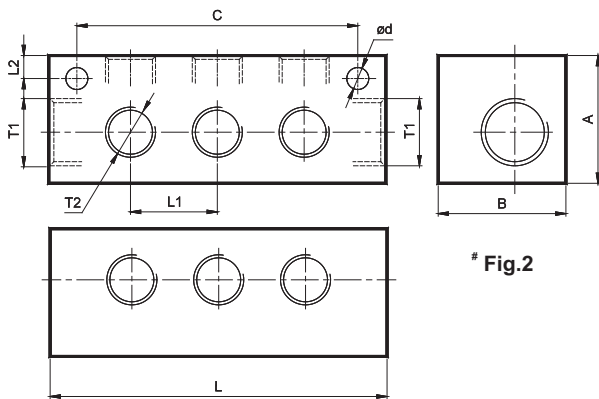
## Series WJ

Cat No WJ - 01 - 02

### Type WJ03



\* Fig.1

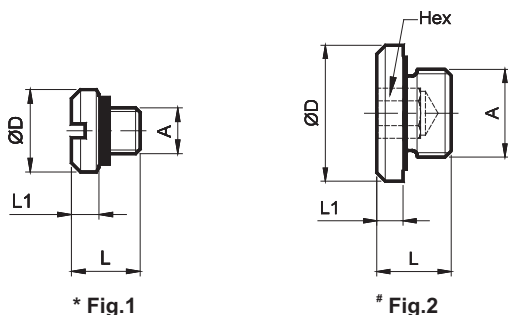


# Fig.2

T1	T2	No. off T2 Ports	A	B	L	L1	L2	C	Ød	Ordering No
G1/8	* M5 x 0.8	6	25	20	42	10	3.5	32	4.5	WJ03066070
G1/4	# G1/8	6	25	25	66	17	3.5	55	4.5	WJ03066160
G3/8	# G1/4	6	30	30	82	22	6	70	5.5	WJ03066261
G1/2	# G3/8	6	38	38	100	26	6	85	6.6	WJ03066362
G1/2	# G1/2	5	40	40	117	32	6	100	6.6	WJ03056363

## ACCESSORIES

### Port Plugs



\* Fig.1

# Fig.2

A	ØD	L	L1	Hex	Ordering No
* M5	9	7.5	4	-	WAP070
# G1/8	15.5	8.5	3	5	WAP060
# G1/4	19	10.5	4	6	WAP061
# G3/8	23	11.5	4	8	WAP062
# G1/2	28	14	5	10	WAP063

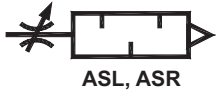
### How to order

While ordering Junction box, mention the ordering number given in the corresponding tables.

Subject to change



ASB, ASC



ASL, ASR

## SILENCER

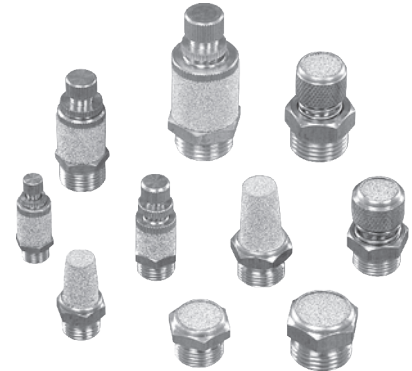
### Series AS

Cat No AS - 01 - 02

### SILENCER M5, 1/8, 1/4, 3/8, 1/2

#### Features

- Brass body and sintered bronze silencer elements
- Button, Conical, Silencer cum flow control (with lock nut), Silencer cum flow control (with spring) types
- Good flow and silencing characteristics
- Can be cleaned by kerosene and soap water



#### Application

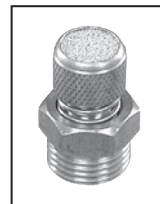
Silencers are used to reduce the noise of the exhaust air.

#### Silencer cum flow control (with lock nut)



Thread	Ordering No
G1/8	ASL0160
G1/4	ASL0161
G3/8	ASL0162
G1/2	ASL0163

#### Silencer cum flow control (with spring)



Thread	Ordering No
G1/8	ASR0160
G1/4	ASR0161
G3/8	ASR0162
G1/2	ASR0163

#### Silencer (Conical) - Slotted head



Thread	Ordering No
G1/8	AS0160
G1/4	AS0161

#### Silencer (Conical) - Hexagon



Thread	Ordering No
M5	ASC0170
G1/8	ASC0160
G1/4	ASC0161
G3/8	ASC0162
G1/2	ASC0163

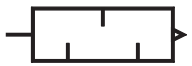
#### Silencer (Button)



Thread	Ordering No
G1/8	ASB0160
G1/4	ASB0161
G3/8	ASB0162
G1/2	ASB0163

#### How to order

While ordering Silencers, mention the Ordering number given in the corresponding tables.



# HIGH PRESSURE SILENCER

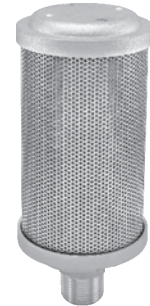
## Series AS02M

Cat No AS02M - 01 - 01 - B

### HIGH PRESSURE SILENCER - G1/2, G3/4, G1

#### Features

- Maximum of 35 dB noise reduction
- Provided with Hex head, making it easy for assembly
- Exhaust air flows softly to atmosphere
- Maintenance free and prolonged service life



#### Applications

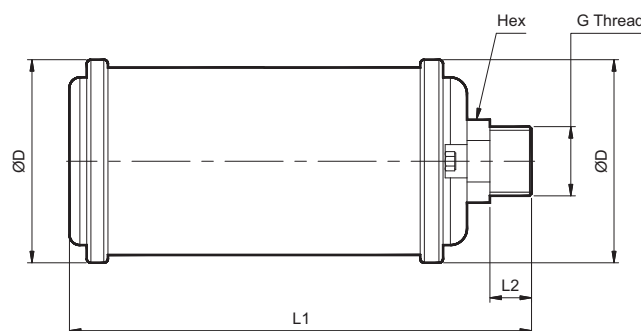
- PET moulding application
- Air driven equipment

#### Technical Specifications

Medium #	Air
Ambient temperature	-10° to +60° C
Maximum operating pressure	50 bar
Threaded connection	Male: G Thread
Applicable thread size	G1/2, G3/4 & G1
Noise reduction (dB)	35 (Supply Pressure 40 bar)

# - for other medium, contact JANATICS

#### Basic dimensions



Thread	ØD	L1	L2	Hex	Weight (g)	Ordering No
G1/2	80	148	14	22	367	AS02M0353
G3/4	86	184	17	28	500	AS02M0354
G1	99	222	22	34.5	700	AS02M0355

#### How to order

While ordering High pressure silencers, mention the ordering number given in the corresponding tables.

Subject to change





# QUICK COUPLER

## Series WQ

Cat No WQ - 01 - 01

### QUICK COUPLER - 5NW, 8NW

#### Features

- Nickel plated brass body
- High flow characteristics
- Wide range of models
- Maintenance free and long life
- Compact size
- Attractive design
- Teflon pre-coated male taper threads



#### Applications

This can be effectively used in all compressed air line applications  
Some of them include

- All compressed air lines
- Assembly lines with pneumatic tools / Machinery with pneumatic systems
- Pneumatic control panels

#### Operation

To connect the coupling, simply push the plug in to the coupling.

To disconnect the coupling, push the sleeve back and the plug automatically comes out.

#### Safety precautionary note

During disconnecting under pressure, the plug comes out with high speed and force. Hence care to be taken to prevent injury.

#### Technical Specifications

Model No	Socket	WQC03...	WQC14...
	Plug	WQP03...	WQP14...
NW		5	8
Thread		1/4	1/2
Medium		Air	
Working Pressure range		0 - 10 bar	
Ambient temperature		-10° to +60° C	
Medium temperature		+5° to +50° C	
Flow (lpm)		1000	2250
Coupling load at 10 bar (kgf)		13	15
Materials of construction		Brass, Stainless steel, Nitrile & Acetal	

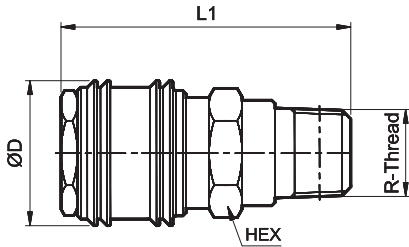
# QUICK COUPLER

## Series WQ

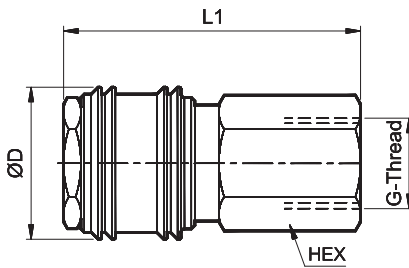
Cat No WQ - 01 - 01

### MODEL WQC03 ( NW - Ø5 )

#### Socket



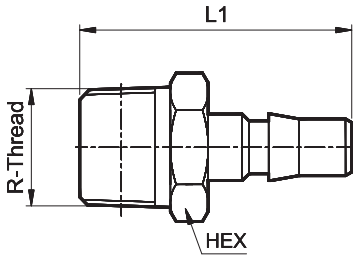
Thread	ØD	L1	HEX	Ordering No
R1/4	22	44	17	WQC03M51



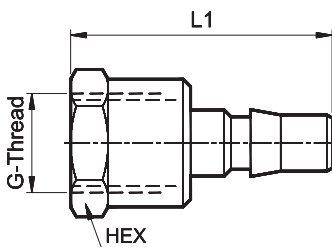
Thread	ØD	L1	HEX	Ordering No
G1/4	22	43	17	WQC03F61

### MODEL WQP03

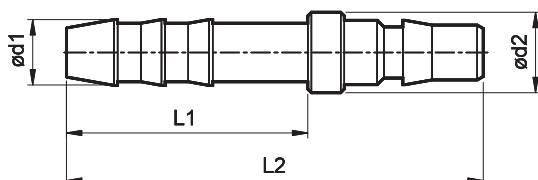
#### Plug



Thread	ØD	L1	HEX	Ordering No
R1/4	-	36.5	14	WQP03M51



Thread	ØD	L1	HEX	Ordering No
G1/4	-	35	17	WQP03F61



Applicable Hose ID	Ød1	Ød2	L1	L2	Ordering No
Ø8	9	11	33	57	WQP03T08

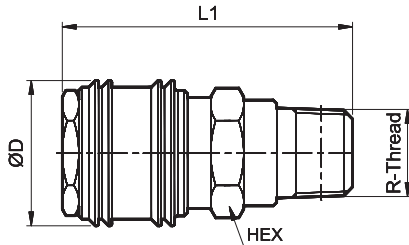
# QUICK COUPLER

## Series WQ

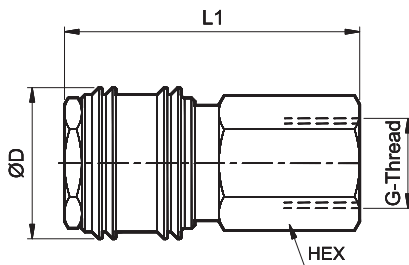
Cat No WQ - 01 - 01

### MODEL WQC14 ( NW - Ø8 )

#### Socket



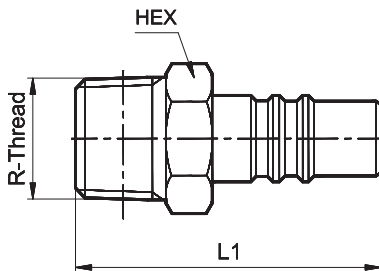
Thread	ØD	L1	HEX	Ordering No
R1/2	27.5	48.5	22	WQC14M53



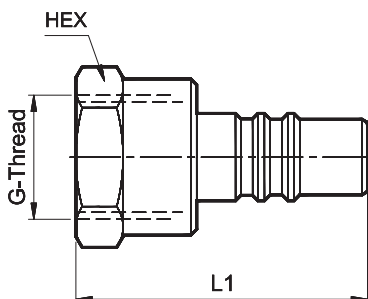
Thread	ØD	L1	HEX	Ordering No
G1/2	27.5	57	24	WQC14F63

### MODEL WQP14

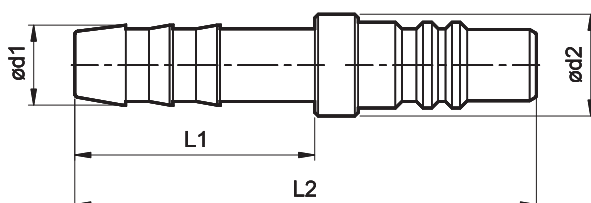
#### Plug



Thread	ØD	L1	HEX	Ordering No
R1/2	-	48	22	WQP14M53



Thread	ØD	L1	HEX	Ordering No
G1/2	-	45	27	WQP14F63



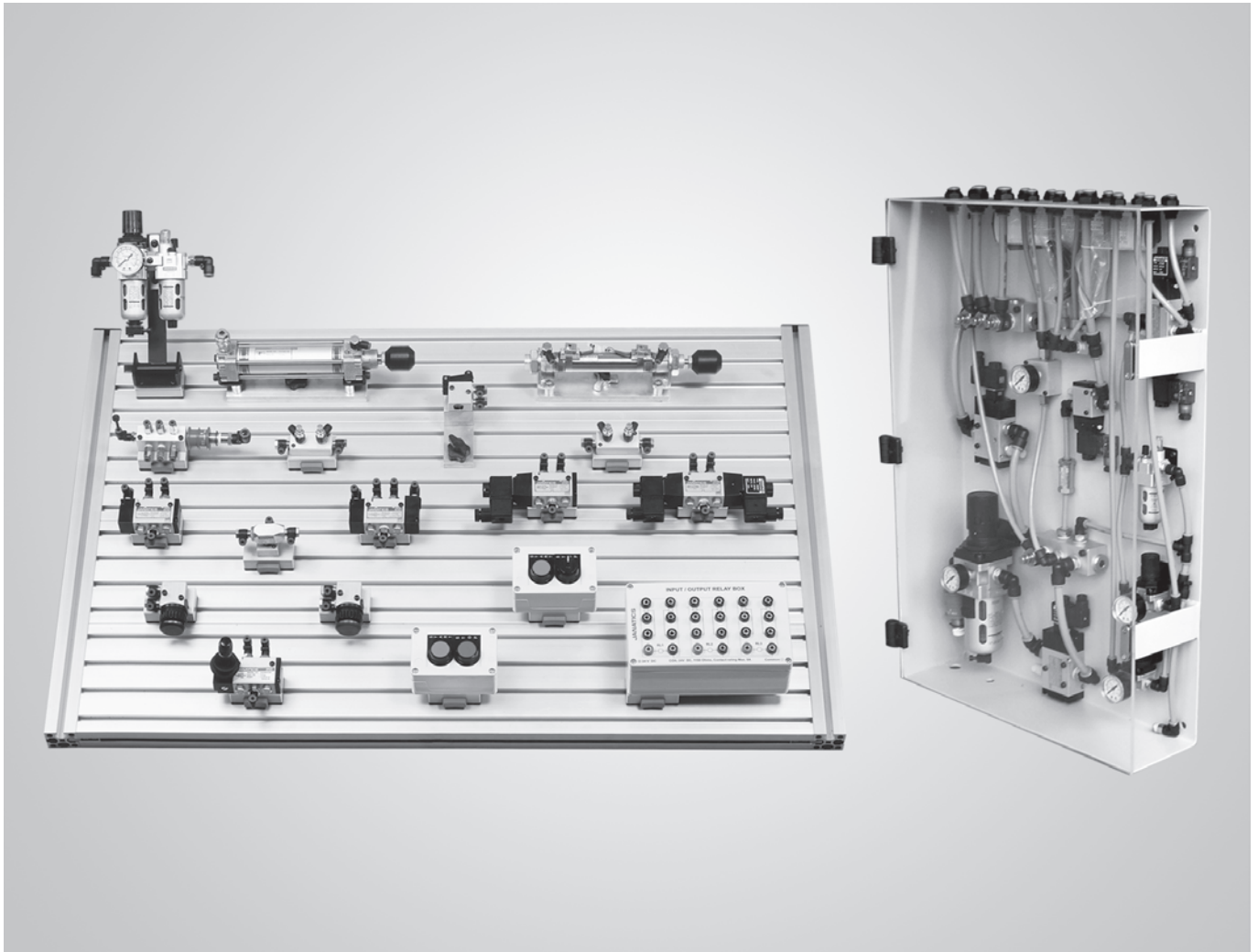
Applicable Hose ID	Ød1	Ød2	L1	L2	Ordering No
Ø10	11	14	33	63.5	WQP14T10

Subject to change



# Pneumatic Systems

Series : JPS & JTK



- Pneumatic Systems - (Cabinets & Panels)
- Pneumatic Trainer Kit - (JTK7, JTK8, JTK9)

# PNEUMATIC SYSTEMS

## Series JPS

Cat No JPS - 01 - 01

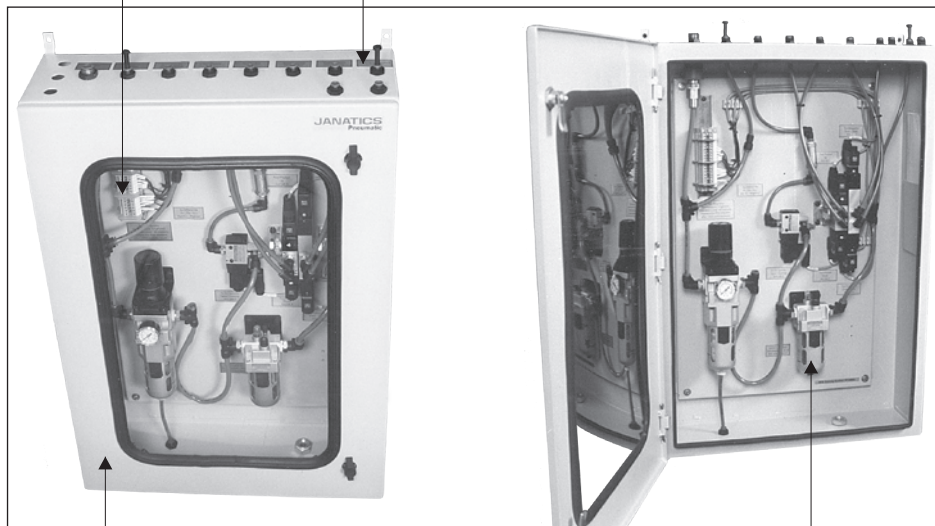
### PNEUMATIC SYSTEMS - ( Cabinets & Panels )

#### Features

- ❑ Easy and fast commissioning
- ❑ Fully wired
- ❑ Guaranteed operational reliability
- ❑ Complete turnkey solution
- ❑ Makes repeat ordering easy
- ❑ Custom build systems
- ❑ Reserve positions to allow expansion

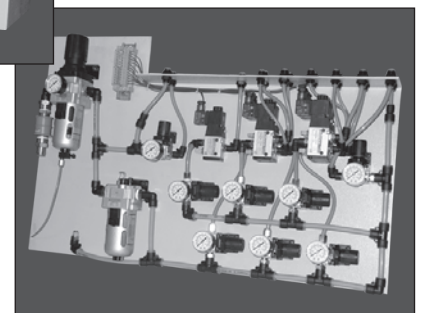
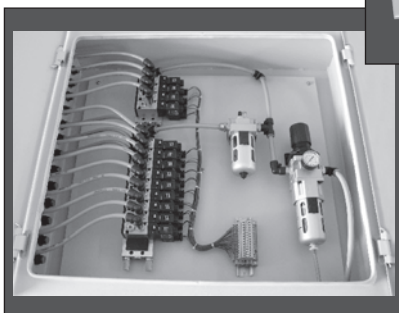


Solenoid coils  
prewired with terminals      Tags / Legends



Control Cabinets / Panel

Pneumatic Components



Subject to change

# TRAINER KIT

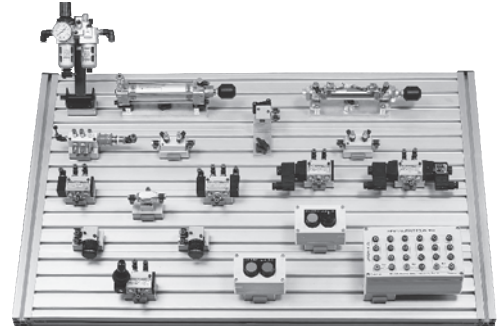
## Series JTK

Cat No JTK - 01 - 01

### TRAINER KIT

#### Features

- ❑ Prepared as per DTE curriculum
- ❑ Available in 3 variants
  1. Basic pneumatic trainer kit
  2. Electropneumatic trainer kit
  3. Electropneumatic trainer kit with PLC
- ❑ All the models are upgradable
- ❑ Ideal for laboratory in Engineering and Polytechnic institutes
- ❑ Ideal for corporates having TPM & ISO based training programmes
- ❑ **Note:** Aluminium workbench is not a part of the trainer kit. It should be ordered separately



#### Types of kits & Capabilities

##### Basic Pneumatic Kit

- Design and function of Pneumatic system - Basic
- Function and identification of pneumatic components and their symbols
- Manual & Mechanical controls for single cycle and multi cycle automation
- Usage of AND / OR valves for logical functions
- Sequencing of cylinders using external pilot operated valves
- Connection of components using One touch fittings and PU tubes (no tools required)

##### Electro Pneumatic Trainer Kit

- Apart from the capabilities mentioned under basic pneumatic, the kit is capable of demonstrating the following functions
- Function and identification of electro pneumatic components and their symbols
  - Single cycle and multi cycle automation of circuits
  - Functioning of Timer circuit
  - Sequencing of cylinders using Solenoid pilot operated valves and Relays
  - Changing of logic without disturbing the tubing
  - Connection of Coils & Sensors with Relays using 4mm stackable banana plugs (no tools required)
  - Direct interface with PC with the help of digital Input / Output interface kit and Automation Studio software

##### Electro Pneumatic Trainer kit with PLC

- Apart from the capabilities mentioned under basic pneumatic & Electropneumatic, the kit is capable of demonstrating the following functions
- Handling of complicated logics using simpler PLC ladder logic program
  - Functioning of Timer and counter circuit
  - Changing of logic without disturbing the tubing and wiring
  - Connection of Coils & Sensors with PLC unit using 4mm stackable banana plugs (no tools required)

#### ACCESSORIES

##### Switch Mode Power Supply

Ordering no	JTKSMPS
Input	230V AC (50 Hz)
Output	24V DC (3 Amps)



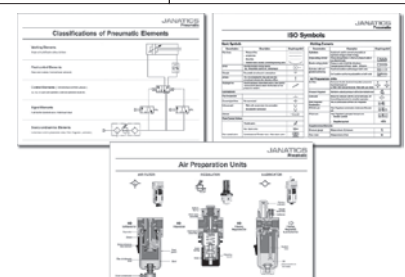
##### Profile Table Draw

Ordering no	JTKPTD
-------------	--------



##### Wall Posters

Ordering no	JTKWPA1
-------------	---------



# TRAINER KIT

## Series JTK

Cat No JTK - 01 - 01

### Cut Sections



### Horizontal mounting accessories

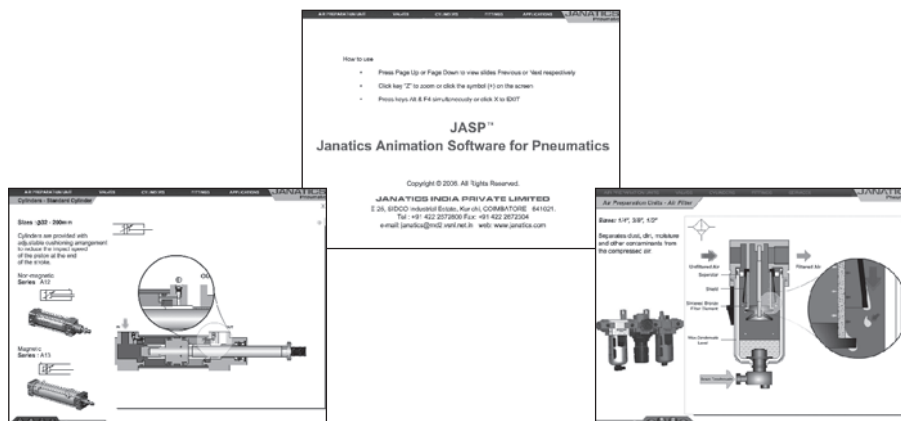


### JASP (Janatics Animation Software for Pneumatics)

This software package is developed keeping in mind that this should be a handy tool for the trainers in Educational Training Institutes & corporate training centres to go hand in hand with the latest in the industry.

With this software,

- Functional features of products & components can be understood
- The virtual cutsectional animations lets the students to know the internal details of the product & to understand the functions simultaneously.
- Trainers can explain about the products and can educate the students at a very short period, so as to have ample time on using trainer kits to gain more practical knowledge
- Even a non-technical person can easily understand the concepts of pneumatic products









## Safety Instructions

### Compressed Air Safety



**Following Safety instructions should be strictly followed. Failure to do so may result in accidents, equipment malfunctioning, serious personal injury and / or loss of life.**

*Compressed air is a source of considerable energy. When handling products dealing with compressed air, the following precautions must be taken to prevent accidents.*

1. Human hands or any parts of a human body should not block compressed air. Compressed air should not be allowed to impinge on any portion of the human body.
2. Before connecting any pneumatic equipment to the compressed air supply, all mounted fittings, piping assemblies and electrical connections should be checked for security. All plastic plugs in the equipment used for protection during shipping should be removed.
3. No piping alterations, removal of fittings, repairing of equipment etc. should be attempted with air supplies connected. Air and electrical supplies must be disconnected before beginning any adjustment, maintenance or dismantling of equipment.
4. The maximum allowable operating pressures, temperature, flows etc. must be strictly observed. Failure to do so might result in catastrophic failure of equipment, and result in serious personal injury and / or death. Refer to individual catalogs for this information, and any other operating or application limitations.

### Compressed Air Safety for Pneumatic Equipment :

#### **Warning**



#### **1. Compatibility of pneumatic equipment**

*Ensuring the compatibility of the procured FRL equipment is the responsibility of the person who designs the Pneumatic system and / or System specifications. This should be based on specifications or after analysis and / or tests to meet specific requirements.*

#### **2. Repair & Maintenance**

Assembly, handling, or repair of pneumatic systems should be performed by only trained and experienced operators.

#### **3. Safety First**

Do not service machinery / equipment or attempt to remove any component until safety is confirmed.

- Inspection and maintenance of machinery / equipment should only be performed after confirmation that both compressed air and electrical supply have been positively disconnected and all residual compressed air in the system has been completely exhausted to the atmosphere.

#### **4. Contact Janatics if equipment is to be used in any of the following conditions :**

1. Equipment is to be used in conditions beyond the given specifications, or if equipment is to be used outdoors.
2. Equipment is to be used in conjunction with atomic energy, railroad, air navigation, automobiles or related vehicles, medical equipment or safety equipment.
3. In applications that adversely effect humans, animals, or property requiring special safety analysis.

### Product Selection

#### **Warning**



*Standard Filters, Regulators, Lubricators and Filter- Regulator Combination units should be used in accordance with the specifications mentioned in the catalogs / specification sheets. While installing and using this equipment, please also follow the respective specification & instruction manual available for each product.*



Wherever this symbol is shown, it indicates **Caution!** and / or **Warning!**

It indicates that operator error can lead to damage and malfunctioning of the pneumatic equipment and can lead to serious personal injury or loss of life.

### 1. Air Filter and Lubricator

Standard Filters and Lubricators incorporate polycarbonate bowls and / or observation windows. Do not use filters & lubricators in an environment that will expose the above components to synthetic fluids, organic solvents, corrosive chemicals, cutting lubricants, thread sealant or similar materials.

Make sure that the condensate is periodically drained when using manual drain valves on Filters.

### 2. Regulator

- a. Safety devices shall be placed to prevent secondary (output) pressure from rising past the set pressure. This will ensure that damage to the components on the secondary side will be minimized in the event of a malfunction.
- b. In a standard regulator, when the supply pressure is removed or disconnected, either of the following may happen :
  1. The residual pressure will remain on the secondary side of the regulator.
  2. The pressure on the secondary side of the regulator will exhaust.

The designer should add components to the circuit to compensate for any of the above conditions.

- c. Regulator operation may be affected when used in Balanced or Secondary sealed circuits. Please consult Janatics regarding these applications.

### 3. Lubricators

Ensure proper function of the Lubricator. Minimum airflow rate should be ensured for effective lubrication.

### 4. Automatic Drains - Normally Open

Ensure minimum working pressure for proper functioning of the Auto drain. The Filter unit must be periodically checked for condensate that would not be drained in case of any drain malfunction.

## Compressed Air Safety - Valves

1. Check security of fittings, pipes, valve installation and electrical connections before use.
2. All electrical connections are to be completed by a person qualified to undertake electrical work.
3. Ensure that all air supplies and electrical connections are isolated before dismantling valves from sub plates, or removing fittings, cables or solenoids from valves
4. During prolonged or frequent energisation, valve solenoids can become hot. Ensure that this will not affect surrounding material and components, and that adequate ventilation is provided.
5. The spool and sleeve assemblies of metal seal valves incorporate sharp edges. Protective gloves should be worn for dismantling and maintenance operations.
6. When selecting valves for applications, the design method of actuation and fundamental operating principles of differing valve models and ranges must be considered.
7. Machinery designated as Annex 4 by the EC Directive of Machinery, Which includes pneumatically controlled power presses, have special requirements for control valves and preclude the use of other than specialized equipment.

## Warranty

Janatics products are warranted to be free of defects in design, material or workmanship under proper use, installation, application & maintenance in accordance with Janatics written specifications and Safety Instructions for a period of 12 months from the date of shipment from the factory. Janatics warrants that all the Products are suitable for their intended purposes only. Janatics obligation under this warranty is limited to repair or replacement of the product at the discretion of Janatics and provided such product is returned to Janatics freight prepaid and upon examination by Janatics such is found to be defective.

This is the only authorised Janatics Warranty and is in Lieu of all other expressed or implied warranties or representation including any implied warranties of merchantability or fitness or any other obligations on the part of Janatics

In no event will Janatics be liable for business interruptions, loss of profits, personal injury, cost of delay or for any other special indirect, incidental or consequential losses, cost or damages.

### Not covered under Janatics warranty :

- Normal wear or deterioration of components and product
- Product(s) not used or installed as designed or intended
- Product is not installed or maintained as described and directed in the product installation and operations manual
- Product contains non-original OEM parts, or was previously repaired or serviced by an unauthorised distributor or repair facility

**General:** Due to continuous product improvement, all specifications are subject to change.

## **Instructions for Product Disposal & End of Life treatment**

Ordinary industrial waste (recyclable and non-recyclable) is generated by industrial or commercial activities, but is similar to household waste by its nature and composition. It is not toxic or hazardous and thus requires no special treatment. These non-hazardous wastes can be either recycled & reused or treated & disposed, safeguarding the environment, in compliance with the statutory and regulatory requirements for quality, environment and Occupational Health & Safety (OHS).

Internally every Janatics personal is well informed on disposal categorization of components through the Bill of materials.

### **Disposal method :**

The main parts of the Janatics product are metals & can be recycled to preserve natural resources and energy.

1. Dismantle the product and detach each component separately and dispose according to the legislation of the country
2. Generally all metals such as Steel, Aluminum, Copper and its Alloys, and Precious metals can be recycled again as raw materials according to local regulations.
3. Also some plastics like PET, HDPE, PVC, PA, PoM, & packing materials like PU foam & PE film can be recycled with the aid of local regulations.
4. Other plastics like PP and LDPE are difficult to recycle which requires special processes to avoid adverse environmental impact.
5. Rubber parts can be disposed by land fill or incineration following international and national regulations
6. Electrical & Electronic components like Printed circuit boards and reed switches need selective treatment and IEC 62635 guidelines can be referred.
7. To aid recycling and disposal approach deposition either by own or through the authorized agency to sustain the environment.
8. Remove all organic coatings, paint, and lacquered scrap by thermal decoating treatment prior to melting so as to avoid gaseous emissions and decomposition.
9. Follow national & international regulations for End of Life treatment of all components and consumables.





